

LUMAX[®]

Lubrication Equipment

www.Lumax.Com



LUMAX[®]

Lubrication Equipment

**There's a lot of clutter out there.
Cut through it. With the
Lumax[®] Merchandising
Program.**



Table of Contents

Product	Page No.	Product	Page No.
Battery and Radiator Fillers	29	Grease Fittings	
Displays	47	Button Head Couplers & Adapter	44
Dollies	31	Cross-reference Chart	45
Drain and Drip Pans	29-31	Drive Type	39
Filter Wrenches	32	Drive-in Grease Fitting Tools	39
Flow Control Thumb Measures	28	Grease Fitting Caps	44
Funnels and Pour Spouts	26-27	Installation and Removal Tools	44
Grease Guns	4-12	Metric Thread	40
PneuLuber	8-9	Stainless Steel	41
SuperLuber	10-11	Thread Forming / Spin Drive	38
Grease Gun Adapters	15-16	Grease Joint Rejuvenator	44
Grease Gun Couplers	14-15	Index, Numerical	46
Grease Gun Extension Pipes	16	Measures	28
Grease Dispensers	15-16	Measures, Flow Control	28
Grease Hoses	13	Measures, Galvanized	28
Grease	12	Merchandisers	47
Grease Fittings Category	34-43	Oil Filter Wrenches	32
1/8" Pipe Thread	37	Oil Lift Drains	31
1/4" Pipe Thread	38	Oilers	17
1/4"-28 Thread	36	Pumps	18-25
Special Thread	37	Suction Gun	12
Assortments	42-43	Transmission Pan Adapter	30
Button Head	41	Numerical Index	46



Lumax®.....Efficiency by Design

Lumax® offers precision engineered, long lasting Grease Guns that are built for heavy-duty service and a lifetime of performance. Lumax® Grease Guns are manufactured from the highest grade materials and to rigid quality standards. Designed with the user in mind, there are many unique features that are incorporated into Lumax® Grease Guns which make work easier and faster for the rigors of professional use. Each Lumax® Grease Gun goes through several quality control checks to ensure the highest quality level, thus, assuring that they meet the demanding requirements for rugged use for most professional Industrial, Construction, Automotive and Farm applications.

Lumax® Grease Guns offer Advanced Featuresthat are unmatched in the Industry:

- Exclusive Design. Heavy-duty, LuCast™, Cast-Alloy Head with Heavier and Reinforced Wall Thickness for Extra Strength and Durability. Solves the problem of Grease "by-pass" common to Sheet Metal heads. One piece, LuCast™ Cast-Alloy Heads are Pressure Tested for Safety and Heavy Duty Performance. Test Pressure : 12,000 PSI (825 Bar). Burst Pressure : 17,500 PSI (1200 Bar)
- Precision Machined Steel Piston and Pump Cylinder configuration delivers twice the volume of grease per stroke compared to conventional Grease Guns. Also prevents Lubricant bypass, helps eliminate trapped Air Pockets and resists Scoring, resulting in a longer life. Hardened Piston prevents deforming over time, providing consistent performance even after extended usage (no wear out even after 30,000 strokes)
- Unique Toggle Mechanism Design uses Compound Leverage for High Pressure Pumping with little effort — Delivers Fast, Dependable Lubrication without Jamming. Additionally, this unique design helps prevent accidental damage to Piston
- Flexible and Solid Extension Capability
- Handy three-way loading — Cartridge, Suction or by Pump. Fill with 14 oz. (397 g) Cartridge or 16 oz. (454 g) Bulk Grease
- Equipped with Air Bleeder Valve to vent Air Pockets in the Grease Chamber
- Oil Resistant Gasket in the Head for a Secure Seal
- Heavy-duty Follower Spring for Prime retention — ensures Positive Priming and consistent, uninterrupted Pumping Action
- Tough, Full-molded Follower eliminates Grease by-pass and allows a Superior Seal for either Cartridge or Bulk Loading
- Longer Lever Handle assures firm Grip and increased Leverage — develops more pressure with less effort. Maintains Pressure and Grease Flow on short Strokes in confined spaces
- Contoured Lever Handle Design offers increased Leverage and helps avoid injury to fingers during Pumping Action
- Oil Resistant Grip with Non-slip finger Contours for Comfort and Safer Operation
- Heavy Gauge Steel Barrel — 18 G / .052" / 1.3 mm wall thickness assures extra Durability and withstands high Crush Pressures of being run over by a Car or Forklift
- Durable Electrostatic, Corrosion-resistant and Polished Steel Barrel, for Maximum Protection against Corrosion
- Rugged, Wide Band, Non-slip Knurling on Barrel for Sure-grip Handling
- Rolled, Rapid Spin Barrel threads for Quick, Easy Assembly
- Ergonomically Designed T-handle provides Positive Grip. Extra Space on Follower Rod prevents Finger Pinching
- Plunger Lock prevents Accidental Grease Discharge while Loading
- Complete with Grease Coupler with Four Hardened Jaws and Ball Check (LX-1400), Non-drip Seal to prevent Leakage and with 6" (150 mm) Grease Gun Extension Pipe, 1/8" NPT (LX-1424)
- Informative and attractive Display Packaging

Lumax® Grease Guns offers Performance and Value.....and is the first choice of all professionals. To meet the needs of all your customers, there's a Lumax® Grease Gun for every application and budget.

LX-1100 Utility, Lever Grease Gun

Entry-level Gun. Offers Great Performance at an Economical Price

- Cast-alloy Head — Develops up to 10,000 PSI (690 bar)
- Handy 2-way Loading — 14 oz. Cartridge or 16 oz. Bulk Fill
- Heavy-duty Follower Spring for Consistent Priming
- Contoured Lever — Develops more Pressure with less effort
- Slip Resistant Handle Grip assures Firm Grip
- Follower Rod Lock prevents accidental Grease Discharge
- Rugged, Wide band, Non-slip Knurling
- Ergonomically Designed T-handle provides Positive Grip
- Outputs 6 oz. (170 g) of Grease per 100 Strokes
- Packaged - 1/Box, 12/Cartron



LX-1100

LX-1112 Heavy Duty, Standard Grease Gun

Basic Grease Gun with Professional Features. Provides Heavy-duty, High Pressure Lubrication. An Excellent Value!

- Heavy-duty, Cast-alloy Head — Develops up to 10,000 PSI (690 bar)
- Handy 2-way Loading — 14 oz. Cartridge or 16 oz. Bulk Fill
- Equipped with Air Bleeder Valve to vent Air Pockets
- Rugged, Wide Band, Non-slip Knurling for Sure-grip Handling
- Heavy Gauge Steel Barrel for Durability
- Heavy-duty Follower Spring for Consistent Priming
- Contoured Lever — Develops more Pressure with less effort
- Resilient Follower offers Superior Seal & eliminates Grease Bypass
- Slip Resistant Grip assures Firm Grip for Comfort and Safer Operation
- Follower Rod Lock prevents accidental Grease Discharge while Loading
- Ergonomically Designed T-handle provides Positive Grip
- Outputs 5.30 oz. (150 g) of Grease per 100 Strokes
- Packaged - 1/Box, 12/Cartron



LX-1112

LX-1120 Heavy Duty, Deluxe Grease Gun

- Heavy-duty, Lucast™, Cast-alloy Head with Heavier and Reinforced Wall for Extra Strength. Develops up to 10,000 PSI (690 Bar)
- 3-way Loading — 14 oz. Cartridge, 16 oz. Bulk Fill or Fill with Pump
- Equipped with New Short Stroke Valve — allows to maintain Pressure and Grease flow in confined spaces and for accurate applications
- Comes with Air Bleeder Valve to vent Air Pockets and Filler Nipple with Ball Check for use with Grease Filler Pump (LX-1302)
- Heavy Gauge Steel Barrel withstands High Crush Pressures
- Heavy-duty Follower Spring for Consistent Priming
- Rugged, Wide Band, Non-slip Knurling for Sure-grip Handling
- Molded Follower for Superior Seal and eliminates Grease Bypass
- Polished Barrel inside for Smoother Operation
- Deluxe, Contoured Lever helps develop more Pressure with less effort — allows to maintain Pressure for more accurate applications
- Cushioned, Oil-resistant Grip assures firm grip for Comfort and Safer Operation
- Follower Rod Lock prevents accidental Grease Discharge while Loading and helps easy loading at any position
- Ergonomically Designed T-handle provides Positive Grip
- Outputs 5.65 oz. (160 g) of Grease per 100 Strokes
- Packaged - 1/Box, 12/Cartron



LX-1120

LX-1123 Heavy-duty, Deluxe Grease Gun with 18" Flex Hose

- Same As LX-1120, except, with 18" Flex Hose extension (LX-1203) for Hard-to-reach Fittings
- Packaged - 1/Box, 12/Cartron



LX-1123

LX-1142 Heavy Duty, Premium Grease Gun

For the user who wants the Ultimate Grease Gun. Designed Specifically for Heavy-duty use. Built to take Extreme Punishment.

- Heavy-duty, Lucast™, Cast-alloy Head with Heavier and Reinforced Wall Thickness for Extra Strength. Develops up to 10,000 PSI (690 Bar) and Burst pressure over 17,500 PSI (1200 Bar)
- 3-way Loading — 14 oz. Cartridge, 16 oz. Bulk Fill or Fill with Pump
- Chrome plated finish for Maximum Protection against Corrosion
- Equipped with Air Bleeder Valve to release Trapped Air
- Includes Filler Nipple for use with Grease Filler Pump (LX-1302)
- Tough "Reversible" Follower eliminates Grease Bypass and allows a Superior Seal for either Cartridge or Bulk Loading applications
- Deluxe, Contoured Lever helps develop more Pressure with less effort
- Equipped with New Short Stroke Valve — allows to maintain Pressure and Grease flow in confined spaces and for accurate applications
- Heavy-duty Follower Spring for Consistent Priming
- Heavy Gauge Steel Barrel (18 G / 1.3 mm) assures Durability and withstands High Crush Pressures
- Polished Barrel inside for Smoother Operation
- Wide Band, Non-slip Knurling for Sure-grip Handling
- Domed End-cap for Extra Strength and Longer Life
- Slip Resistant Hand Grip for Firm Grip Comfort and Safer Operation
- Ergonomically Designed T-handle provides Positive Grip
- Outputs 4.23 oz. (120 g) of Grease per 100 Strokes
- Packaged - 1/Box, 12/Cartron

LX-1150 Heavy-duty, Deluxe Pistol Grease Gun with 4" Rigid Pipe

- Convenience of One-hand operation for easy Greasing
- Heavy-duty, Lucast™, Cast-Alloy Head with Heavier and Reinforced Wall Thickness for Extra Strength
- Develops up to 7,000 PSI (480 Bar)
- 3-way Loading — 14 oz. Cartridge, 16 oz. Bulk Fill or Fill with Pump
- Air Bleeder Valve to release Trapped Air
- Includes Filler Nipple for use with Grease Filler Pump (LX-1302)
- Chrome Plated Handle for Maximum Protection against Corrosion
- Deluxe, Oil-resistant, Contoured Grip for Comfort and Firm Grip
- Heavy Gauge Steel Barrel (18 G / 1.3 mm) Polished inside for Smoother Operation
- Wide Band, Non-slip Knurling for Sure-grip Handling
- Tough Follower offers Superior Seal and eliminates Grease Bypass
- Heavy-duty Follower Spring for Consistent Priming
- Posi-lock Follower Rod with Ergonomically designed T-handle provides Sure-handed Grip and easy filling at any position
- Outputs 4 oz. (115 g) of Grease per 100 Strokes
- Packaged - 1/Box, 12/Cartron

LX-1152 Heavy-duty, Deluxe Pistol Grease Gun with 18" Flex Hose

- Same As LX-1150, except, with 18" Flex Hose extension (LX-1203) for Hard-to-reach Fittings

Warning : Do not hold Whip Hose while pumping the Grease Gun. Replace damaged Whip Hose with 4500 PSI (310 Bar) Rated Hose only.



LX-1142



LX-1150



LX-1152

LX-1160 Deluxe, Air Operated Grease Gun

- Ergonomically Designed and Perfectly Balanced for Comfort
- Convenience of One-hand Operation for easy Greasing
- 1/4" NPT Inlet. Outlet : 1/8"NPT. Working Air Pressure of 60-90 PSI Maximum Operating Pressure : 3,000 PSI (205 Bar)
- Pump Ratio : 40:1
- 3-way Loading — 14 oz. Cartridge, 16 oz. Bulk Fill or Fill with Pump
- Chrome Plated Barrel for Maximum Protection against Corrosion
- Equipped with Air Bleeder Valve to release Trapped Air. Includes Filler Nipple for use with Grease Filler Pump (LX-1302)
- Tough Follower for Superior Seal and eliminates Grease Bypass
- Heavy-duty Follower Spring for Consistent Priming
- Heavy Gauge Steel Barrel with Wide Band, Non-slip Knurling
- Posi-lock follower Rod with Ergonomically Designed T-handle provides Positive Grip and Easy Filling at any position
- Outputs 3.5 oz. (100 g) of Grease per 100 Strokes
- Packaged - 1/Box, 12/Cartron

LX-1161 360° Continuous Cycle, Air Operated Grease Gun

Ergonomically Designed and Perfectly Balanced for Comfort with Convenience of One-hand Operation for easy Greasing

- Patented Air Motor : Enables you to Speed-up Lubrication
- Compact Design facilitates work in Tight Spaces at every angle
- 1/4" NPT Inlet. Outlet : 3/8-32 UNEF. Working Air Pressure of 40-150 PSI. Maximum Operating Pressure : 6,000 PSI (414 Bar)
- Pump Ratio : 40:1. Low Operational Noise
- 360° adaptability with a twist of the wingnut to avoid obstacles
- Self-Priming. Equipped with Air Bleeder Valve to release Trapped Air
- 3-way Loading — 14 oz. Cartridge, 16 oz. Bulk Fill or Fill with Pump
- Tough and Resilient Follower with Heavy-duty Spring for Consistent Priming — eliminates Grease bypass and allows a Superior Seal for either Cartridge or Bulk Loading applications
- Posi-lock Follower Rod with Ergonomically Designed T-handle provides Positive Grip and Easy Filling at any position
- Packaged - 1/Box, 2/Cartron



LX-1160



LX-1161



0°



45°



90°



180°



360°



LX-1171 Heavy-Duty, Continuous Cycle, Dual-Piston Air Operated Grease Gun

- Full Automatic Operation – Cycles Continuously with High Pressure Delivery : Dispenses one tube of Grease in less than a minute!
- Patented Dual-piston Gear Motor provides Constant Torque : Enables you to speed up lubrication and control the volume of grease without compromising the output pressure
- Works on Small, Portable Compressors : Requires only 60 ~ 90 PSI Air @4.8 CFM
- 6000 PSI / 413 bar Output Pressure Capability
- Greater Productivity : Delivers almost 6 times the Volume of Grease than other Air Operated Grease Guns
- Patented Variable Speed Trigger : Allows you to control the flow – Eliminates Waste and Avoids Clean-up
- Ergonomically Engineered – the Well-balanced Design reduces Stress on Hand, Arm, Shoulder and Back Muscles
- Built-in Pressure Relief Valve helps identify Blocked Bearings, Lubrication Line or Fittings and allows excess Grease to flow back into Barrel – No Squirting!!
- Compact design facilitates work in tight spaces
- Zero Vibration
- Low Operational Noise
- Exclusive Valve Design eliminates Trapped Air
- Versatile refilling with 3-way loading : 14 oz. Cartridge, 16 oz. Bulk Fill or Fill with a Pump
- Self-priming
- Patented, High-torque, Gear Motor Design provides Outstanding Durability
- Soft, Oil Resistant Grip for Comfort and Safer Operation
- Comes complete with : Safety Trigger Lock – Prevents Accidental Grease Release, Air Bleeder Valve, Filler Valve, Anti-fatigue Strap, Adjustable Hose Holder – Prevents Hose from dangling and 3-Way Handy Wrench
- Worldwide Patented



LX-1171

SPECIFICATIONS :

- Grease Output Pressure : Max. Up to 6,000 PSI / 413 bar (Factory Preset)
- Grease Reservoir Capacity : 14 oz. (400cc / 397g) Cartridge, or, 16 oz. (500cc / 454g) Bulk
- Pneumatic Inlet Pressure : (Min.) : 40 PSI / (Max.) : 90 PSI
- Operating Temperature Range : 0° F to 120° F (-18° C to +50° C)
- Average Air Consumption : 3.5 CFM @ 60-90 PSI
- Lubricant (Grease) : Up to NLGI #3
- Pneumatic Port Inlet : 1/4" NPT
- Grease Port Outlet : 3/8-32 UNEF
- Grease Output : See Chart Below
- Time it takes to dispense one 14.5 oz. (397 g) Grease Cartridge* : < 1 minute @ 90 PSI
- Weight : 7 lbs. (3.2 Kg.)
- Dimensions : 20" x 10.5" x 30" (50 x 27 x 75 cm)
- Outlet Hose : Model LX-1212 : Pressure Rating : 7,500 PSI / 518 bar Length : 30" / 75 cm

PneuLuber™ - Performance Chart

(Grease Output per Minute at various Working Pressures)

Working Pressure	40 PSI	50 PSI	60 PSI	70 PSI	80 PSI	90 PSI	
Air Consumption	3.00 CFM	3.35 CFM	3.71 CFM	4.06 CFM	4.41 CFM	4.77 CFM	
Grease Output at different Pressures (PSI)	1000	6.00 oz./170g	6.70 oz./190g	7.41 oz./210g	9.17 oz./260g	9.88 oz./280g	10.93 oz./310g
	2000	4.94 oz./140g	6.35 oz./180g	7.05 oz./200g	8.46 oz./240g	9.17 oz./260g	10.05 oz./285g
	3000	3.50 oz./100g	4.59 oz./130g	6.00 oz./170g	7.41 oz./210g	8.11 oz./230g	9.17 oz./260g
	4000		3.50 oz./100g	4.59 oz./130g	6.35 oz./180g	7.05 oz./200g	7.76 oz./220g
	5000		1.75 oz./50g	4.23 oz./120g	5.29 oz./150g	6.00 oz./170g	6.70 oz./190g
	6000			3.17 oz./90g	4.23 oz./120g	5.29 oz./150g	6.00 oz./170g

* Based upon NLGI #2, Multi-purpose Grease

Note : Output will vary upon type of Grease its Viscosity, Temperature and on type of application. Add few Drops of Air Tool Oil into Air Inlet every time before use. Protect the Gun from Dirt for Longer Life.

WARNING : Failure to heed the following Warnings, including misuse, over pressurizing, modifying parts, using incompatible chemicals and fluids, or using worn or damaged parts, may result in equipment damage and/or serious personal injury, fire, explosion, or property damage. PneuLuber is a Heavy-duty, Air Operational, Automatic Grease Gun. PneuLuber is designed and developed for use by professionals for manual lubrication of the grease points. PneuLuber is designed to pump and dispense Grease using Pneumatic Inlet Pressure between minimum of 40 PSI to a Maximum of 90 PSI (2.75-6.25 Bar). Under any circumstances, the Maximum Specification Ratings should never be exceeded.

PneuLuber must not exceed Maximum Operating Pressure of 6,000 PSI (413 Bar). Lower incoming Air Pressure will reduce the performance of the Grease Gun, while incoming Air Pressure higher than the rated 90 PSI (6 Bar) will damage the internal components of the Grease Gun. Use of higher incoming Air Pressure can also cause injury. Also, the use of higher incoming Air Pressure places the internal components under undue loads and stresses that they are not designed for, and could cause premature Grease Gun failure.

DO NOT EXCEED 90 PSI (6 Bar) incoming Air Pressure.

Lumax® reserves the right to change specifications without notice. Specifications may differ from country to country



THE WORLD'S MOST ADVANCED GREASE GUN
DESIGNED TO BOOST SALES & PROFITS!

Grease Guns

Productivity is key in today's Global Economy. Superluber™ gets your job done Faster, Better and with the Highest Productivity — you get things done at a lower cost. Superluber™ offers the most advanced and State-of-the-art features.....Unmatched in the Industry!



Model	Item
LX-1162	With One 12V Battery, 120V Charger
LX-1163	With Two 12V Batteries, 120V Charger
LX-1162-E	Euro Model with One 12V Battery, 240V Charger
LX-1163-E	Euro Model with Two 12V Batteries, 240V Charger

- Ergonomically Engineered : Reduces Fatigue and Muscle Stress
- Patented Configuration : Delivers up to 5 times the volume of Grease compared to Manual models. Dispenses approx. 1 g Grease/Stroke
- Efficient Power Transmission : Battery Pack lasts long enough to dispense almost 6 tubes of Grease, per single charge
- Patented Variable Speed Trigger with Electric Brake : Avoids Waste & Clean-up
- Constant Torque : Maintains pressure at a constant 6,000 PSI, enabling you to control the volume of grease without compromising the pressure
- Versatile refilling with 3-way loading : 14 oz. Cartridge, 16 oz. Bulk Fill or Fill with a Pump
- Built-in Pressure Relief Valve helps identify Blocked Bearings, Lubrication Line or Fittings and allows excess Grease to flow back into Barrel — No Squirting!!
- Soft, Oil Resistant Grip with Non-slip Contours for Comfort and Safer Operation
- Comes with : High Capacity 12 V Battery, Fast Charger 30" High Pressure hose 1/8"NPT x 3/8"-32UNEF Bleeder and Filler Valve, Anti-fatigue Strap, Wrench Hose Holder, and Heavy-duty Carrying Case
- Includes : Safety Trigger Lock — Prevents Accidental Grease Release, Rubber Boot on Battery Pack absorbs Knocks or Impact and helps prevent damage to Battery. Adjustable Hose Holder — Prevents Hose from dangling



LX-1162



Heavy-Duty



Industrial



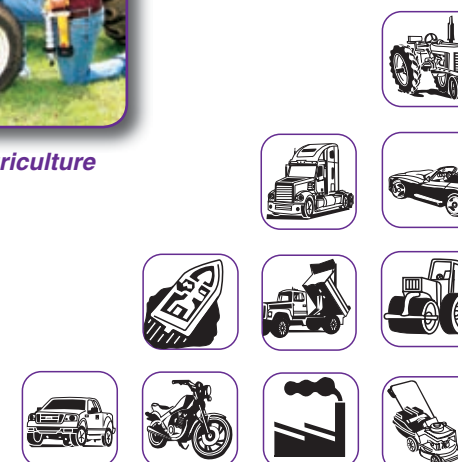
Agriculture



Automotive



Construction



Grease Guns



Sturdy and Attractive Display Packaging



**Grease tubes not included

SuperLuber's Accessories

Battery Pack : LX-1164

Battery Type : Ni-Cd
 Voltage : 12 Volt DC
 Capacity : 1500 mAh

Power Battery Charger : LX-1165

Output : 12 Volt DC
 Input Voltage and Frequency : 120 Volt, 60 Hz, AC only
 Charge Time : 1 Hour
 Battery Charger Current (Fast Charge) : 1500 mAh

Vehicle (Field) Battery Charger : LX-1166

Plugs into Standard Cigarette Lighter
 Output : 12 Volt DC. Input : 10.5 ~ 14.5 Volt DC only
 Working Temperature : 32° F ~ 112° F (0° C ~ 45° C)
 Charge Time : 40 ~ 60 minutes

Euro Power Battery Charger : LX-1167

Output : 12 Volt DC
 Input : 220-240 Volt, 50-60 Hz, AC only
 Charge Time : 1 Hour
 Battery Charger Current (Fast Charge) : 1500 mAh



LX-1164



LX-1165



LX-1166

Warning - Safety First!

Failure to Follow all Instructions listed on the Operator's Manual may result in Electric Shock, Fire and/or Serious Personal Injury including Death. Under any circumstances, the Maximum Specification Ratings should never be exceeded. Any other use not in accordance with these Instructions will result in loss of claim for Warranty.

Lumax® reserves the right to change specifications without notice. Specifications may differ from country to country.



LX-1172



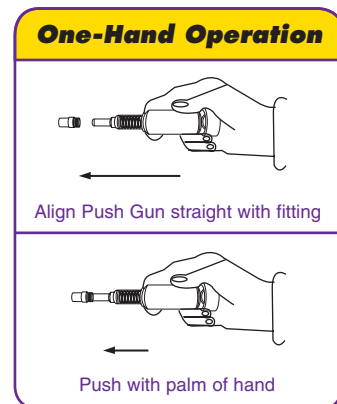
LX-1901

LX-1172 Mini-Pistol Grip Grease Gun with 3 oz. Cartridge

- Compact and Lightweight
- Pistol Grip for easy, One-hand Operation
- Perfect for Hard-to-reach jobs
- Heavy-duty, Special, LuCast™, Cast-Alloy Head
- Two-way loading — Cartridge or Bulk
- Outputs 1.5 oz. (43 g) of Grease per 100 Strokes
- Contoured Lever develops more Pressure with less effort
- Ergonomically Designed T-handle provides Positive Grip
- Non-drip Seal on Grease Coupler to Prevent Leakage
- Ideal for Handyman, Automotive, Industrial, Farm and RV applications
- Complete with 4" (100 mm) Extension Pipe, Grease Coupler (LX-1400) and Non-drip Cap
- Packaged - 1/Box, 10/Cartron
- Replacement Cartridges : LX-1900 (12/Cartron) LX-1901 (3-pack)

LX-1173 Disposable Push-Lube Grease Gun

- Convenient Size
- Ready to Use
- Pre-Loaded with All-Purpose Grease
- Special Steel-Nose Nozzle
- Spring-Loaded Pump Action for Ease of One-hand Operation
- Delivers 2 oz. (57 g) of NLGI #2 Grease
- Maximum PSI of 3,700 PSI
- Packaged - 1/Box, 10/Cartron



LX-1173



Suction Gun

LX-1185 Heavy-duty, Suction Gun (18 oz. / 510 g) with 12" Flex Hose

- Excellent for Draining and Filling Differentials, Transmissions, Clutches, Gear Cases, etc.
- 18 oz. (1 Pint / 510 g) Fluid Capacity with 10" (250 mm) Stroke
- Needs no Priming
- Double-lipped, Precision Follower provides Sure-seal and eliminates fluid bypass for Maximum Suction and Discharge
- Heavy Gauge Steel Barrel (18 G / 1.3 mm) assures Durability
- Rugged, Wide Band, Non-slip Knurling for Sure-grip Handling
- Heavy-duty Head and end-cap with Chrome plated finish
- Ergonomically Designed T-handle provides Positive Grip
- Complete with 12" Oil and UV Resistant Flex Hose
- Packaged - 1/Box, 12/Cartron

Caution : For use with Non-corrosive Lubricants only



LX-1185



LX-1168



LX-1184

Grease Gun Holders

LX-1168 For Standard Grease and Suction Guns

LX-1184 For Mini-pistol Grease Gun

- Holds Grease and Suction Guns. Mount to any Surface
- Zinc Plated, Corrosion-resistant Finish

For use on Hand Operated Grease Guns only

- Fully Bonded Construction to Maximize Kink Resistance and Minimize Bend Radius
- Both ends have Heavy Duty, High Quality 1/8" NPT Male Threads Fittings
- Bend Radius : Meets or Exceeds SAE 100 R7
- Working Temp. Range : -40° F (-40° C) Min. to 212° F (100° C) Max.
- Nominal I.D. : 1/8" (3.175 mm) Nominal O.D. : 5/16" (8.0 mm)
- Maximum Working Pressure : 4,500 PSI (310 Bar)
- Minimum Burst Pressure : 12,000 PSI (828 Bar)

Caution : Not suitable for Power Operated Lube Equipment

Without Spring Guard, 1/8" NPT, 4500 PSI (310 Bar)

Model	Length
LX-1201	12" (30 cm)
LX-1203	18" (45 cm)

With Spring Guard, 1/8" NPT, 4500 PSI (310 Bar)

Model	Length
LX-1205	12" (30 cm)
LX-1207	18" (45 cm)



LX-1201



LX-1203



LX-1205

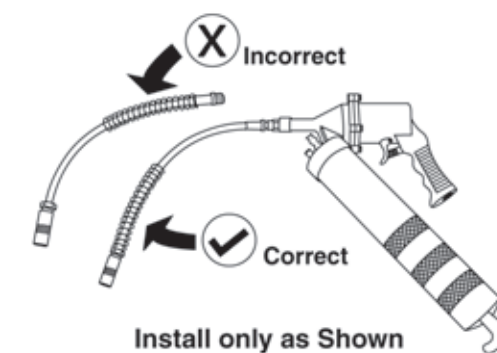


LX-1207

For use on Lumax® Dual-piston, Air Operated and Battery Powered Hand Grease Guns Only

- 1/8" High Quality Hose. One end has 1/8" NPT Male Thread Fitting and other end has Heavy Duty, 3/8"-32 UNEF Male Thread Fitting
- Made of Nylon Liner, Aramid Fiber Reinforcement and Un-perforated Black Urethane Cover
- Fully Bonded Construction to Maximize Kink Resistance and Minimize Bend Radius
- Working Temp. Range : -40° F (-40° C) Min. to 212° F (100° C) Max.
- Bend Radius : Meets or exceeds SAE 100 R7
- Spring Guard provides Non-slip, Push-pull Grip and prevents accidental Kinking
- Nominal I.D. : 1/8" (3.175 mm) / O.D. : .315" (8.0 mm)
- Maximum Working Pressure : 7,500 PSI (517 Bar)
- Minimum Burst Pressure : 20,000 PSI (1380 Bar)
- Comes with Spring Guard at each end

Model	Length
LX-1211	18" (45 cm)
LX-1212	30" (75 cm)
LX-1214	48" (120 cm)
LX-1215	60" (150 cm)



Warning : Do Not hold Grease Hose while Pumping the Grease Gun

LX-1400



Standard Grease Coupler, 4 Jaw, 1/8" NPT

- Designed for use with all Hand-operated and Air-powered Equipment
- Fits all 1/8" NPT threads
- 4,500 PSI (310 Bar) Maximum Operating Pressure
- Built-in Spring-loaded Ball Check Valve prevents Leak, Pressure Loss and Lubricant backup
- Four Hardened Steel Jaws for a Superior Seal and Longer Life
- Precision fit. Slight pushing action snaps Jaws onto fittings
- Small outside diameter permits easy contact with recessed Fittings
- Knurled Body and easy flats for easy Installation and Removal
- Zinc Plated for Maximum Protection against Corrosion

Model	Pcs./Pack
LX-1400	1 pc.
LX-1400-2	2 pcs.
LX-1400-6	6 pcs.
LX-1400-B	60 pcs.



LX-1401

LX-1401 Hex Grease Coupler, 1/8" NPT

- For use with most Hand-operated Grease Guns and Air-powered Equipment. Fits all 1/8" NPT threads
- 6,000 PSI (414 Bar) Maximum Operating Pressure
- Hex Body for easy Installation and Removal
- Built-in Spring-loaded Ball Check Valve prevents Leak, Pressure Loss and Lubricant backup
- Four Hardened Steel Jaws for a Superior Seal and Longer Life
- Precision fit. Slight pushing action snaps Jaws onto fittings
- Zinc Plated for Maximum Protection against Corrosion



LX-1402

LX-1402 Heavy-Duty Grease Coupler, 1/8" NPT

- Designed for use with all Hand-operated and Air-powered Equipment
- Heavy-duty Construction withstands Higher Pressures
- Fits all 1/8" NPT threads. 7,500 PSI (517 Bar) Max. Operating Pressure
- Built-in Spring-loaded Ball Check Valve prevents Leak, Pressure Loss and Lubricant backup
- Hardened Steel Jaws for a Superior Seal and Longer Life
- Permits wide 35° leak-proof Sealing angle
- Knurled Body with Hex base for easy Installation and Removal
- Chrome Plated, Corrosion-resistant Finish



LX-1404

LX-1404 90° Grease Coupler, 3" (75 mm)

- For use on Hand-operated Grease Guns only
- For Hard-to-reach Grease Fittings on Cars, Trucks, Farm Equipment
- Ideal for Lubrication of Front and All-Wheel Drive Vehicles
- Spring Loaded Sleeve locks Coupler in place for angular application
- Zinc Plated for Maximum Protection against Corrosion
- Recommended Working Pressure : 3,000 PSI (207 Bar)
Maximum Operating Pressure : 4,500 PSI (310 Bar)
- Complete with Small & Large Quick-disconnect Sleeves to fit Standard and Heavy-duty Couplers

LX-1406 360° Swivel Coupler, 1/8" NPT

- For use on Hand-operated Grease Guns only
- Swivels in a full 360° circle and locks in place
- 45° angle gives easy access to most Grease Fittings
- 1/8" NPT, Female Inlet
- Zinc Plated for Maximum Protection against Corrosion
- Comes with Lumax®, LX-1400 Standard Grease Coupler
- Recommended Working Pressure : 3,000 PSI (207 Bar)
Maximum Operating Pressure : 4,500 PSI (310 Bar)



LX-1406

LX-1408 Quick Disconnect Grease Dispenser, 4" (100 mm)

- For use on Hand-operated Grease Guns only
- For converting Standard Coupler to other Lube Adapters
- Complete with both Small and Large Sleeves for a Quick connection to Standard and Heavy-duty Grease Couplers



LX-1408

LX-1409 Push-type Adapter, 5" (125 mm)

- For Hard-to-reach Grease Fittings on Cars, Trucks, Farm Equipment
- Includes Slide-on Locking Sleeve
- A simple Push-on motion quickly attaches to a Standard Grease Coupler for fast service
- Zinc Plated, Corrosion-resistant Finish
- For use on Hand-operated Grease Guns only
- Recommended Working Pressure : 3,000 PSI (207 Bar).
- Maximum Operating Pressure : 4500 PSI (310 Bar)



LX-1409

LX-1410 Needle Nose Grease Dispenser, 1½" (40 mm) 1/8" NPT

- For use on Hand-operated Grease Guns only
- 1/8" NPT with Male and Female ends
- Dispenses a fine line of Grease through Needle Nose
- Can be used with Grease Gun Extension or Hose. Ideal for use on Universal Joints and other applications for Pinpoint Lubrication
- Zinc Plated, Corrosion-resistant Finish



LX-1410

LX-1412 Needle Nose Grease Dispenser, 7" (175 mm)

- For use on Hand-operated Grease Guns only
- Dispenses a fine line of Grease through Needle Nose
- Perfect for use on those Hard-to-reach Grease spots on Cars, Vans, 4WD's, Trucks, RV's, Farm Equipment, etc.
- Complete with both Small and Large Sleeves for a Quick connection to Standard and Heavy-duty Grease Couplers



LX-1412

LX-1414 Narrow Needle Nose Grease Dispenser 4¾" (120 mm)

- For use on Hand-operated Grease Guns only
- Hardened Steel Tip Dispenses a fine line of Grease to those Hard-to-reach areas
- Excellent for use on 4 Wheel Drive Universal (CV) Joints
- Comes with both Small and Large Sleeves for a Quick Connection to Standard and Heavy-duty Grease Couplers



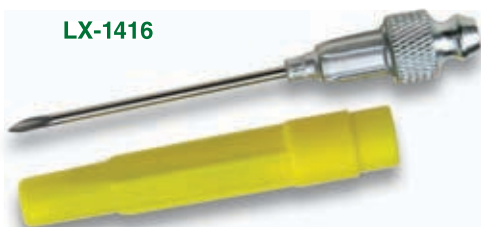
LX-1414



LX-1415

LX-1415 Needle-type Adapter, 5 1/4" (130 mm)

- Needle type Adapter for Flush or Hard-to-reach Grease Fittings
- For use in confined places, especially, the Universal joint fittings
- Includes Slide-on Locking Sleeve
- A simple Push-on motion quickly attaches to a Standard Grease Coupler for Quick Service
- Zinc Plated for Maximum Protection against Corrosion
- For use on Hand-operated Grease Guns only
- Recommended Working Pressure : 3,000 PSI (207 Bar)
- Maximum Operating Pressure : 4,500 PSI (310 Bar)



LX-1416

LX-1416 Grease Injector Needle, 2 1/2" (60 mm)

- For use on Hand-operated Grease Guns only
- Ideal for Lubricating in very tight places like Sealed Bearings and Universal Joints
- 18 Gauge x 2-1/2" (1 x 60 mm) long Stainless Steel Needle
- Equipped with Standard Grease Fitting
- Snaps into any Grease Coupler
- Comes with Protective Plastic Cover
- Great for Hard-to-reach Grease points on Cars, Vans, 4WD's, Trucks, RV's, Farm and Industrial Equipment, etc.



LX-1418

LX-1418 Seal-Off Adapter, 2" (50 mm)

- For use on Hand-operated Grease Guns only
- 1/8" NPT Female threads
- Can be used with Grease Gun Extension or Hose
- Oil and Grease Resistant Rubber Tip
- Zinc Plated, Corrosion-resistant Finish
- Ideal for Lubricating Grease Plugs, Steering Linkage, Front Suspension and Universal Joints



LX-1420

LX-1420 Grease Gun Filler Nipple

- For use to Bulk fill Hand Grease Guns
- 1/8" NPT Male Threads
- Zinc Plated, Corrosion-resistant Finish
- For use with Lumax® LX-1302 Filler Pump
- Diameter : 0.335" (8.5 mm)



LX-1422

LX-1422 Air Bleeder Valve

- For use to Vent Air Pockets in Hand Grease Guns
- Simple and Easy to use
- 1/8" NPT Male Threads
- Zinc Plated for Maximum Protection against Corrosion



LX-1424

LX-1424 Grease Gun Extension Pipe, 6" (150 mm)

- For Hand Operated Grease Guns
- 30° Angle
- 1/8" NPT Male Threads on both ends
- Zinc Plated, Corrosion-resistant Finish



LX-1434

LX-1434 Extension Pipe Adapter, 14" (355 mm)

- For Far-to-reach Grease Fittings on Cars, Trucks, Farm Equipment
- Equipped with Grease Coupler and Slide-on Locking Sleeve
- A simple Push-on motion quickly attaches to a Standard Grease Coupler for Quick Service
- Zinc Plated for Maximum Protection against Corrosion
- For use on Hand-operated Grease Guns only
- Recommended Working Pressure : 3,000 PSI (207 Bar).
- Maximum Operating Pressure : 4,500 PSI (310 Bar)

Lumax® offers Oilers in variety of sizes with Rigid or Flexible Spouts to fit your needs. Features include :

- Heavy-duty, drawn Steel Bodies
- Precision Double Ball Pump
- High Output Pressure
- Large Oil refill Opening
- Durable Epoxy Finish to Resist Rust
- Easy to Assemble and Disassemble makes it easy to Clean
- Large, Stable Base
- Zinc Plated Rigid Spouts for Maximum Protection against Corrosion
- Available in various Capacities with Flexible or Rigid Spouts



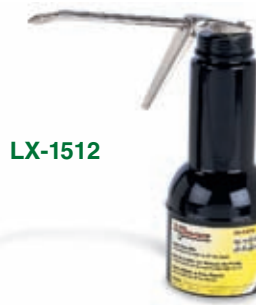
LX-1500



LX-1500W



LX-1502



LX-1512



LX-1514

Pistol Grip Oilers

Model	Description
LX-1500	6 Fl. oz. (180 ml), 30° Rigid Spout
LX-1500W	Wall Bracket, for 6 Fl. oz. (180 ml) Pistol-Type Oiler
LX-1502	6 Fl. oz. (180 ml), 30° Flex Spout
LX-1512	16 Fl. oz./1 Pt. (480 ml), 30° Rigid Spout
LX-1514	16 Fl. oz./1 Pt. (480 ml), 30° Flex Spout
LX-1520	32 Fl. oz./1 Qt. (960 ml), 30° Rigid Spout



LX-1520



LX-1504



LX-1506



LX-1508



LX-1509

Handled Oilers

Model	Description
LX-1504	12 Fl. oz. (360 ml), 30° Rigid Spout
LX-1506	12 Fl. oz. (360 ml), Vertical Flex Spout
LX-1508	16 Fl. oz./1 Pt. (480 ml), 30° Rigid Spout
LX-1509	16 Fl. oz./1 Pt. (480 ml), Vertical Spout
LX-1510	16 Fl. oz./1 Pt. (480 ml), Vertical Flex Spout
LX-1518	32 Fl. oz./1 Qt. (960 ml), Vertical Flex Spout



LX-1510



LX-1518

Lumax® offers Extensive Range of High Quality Pumps.....there's a Lumax® Pump available to meet every Application



Quick-Reference Symbols

- Acids
Chemicals
Corrosive Fluids
- Detergents
Disinfectants
Soaps, Waxes
- Food
Edible Oils
and Fluids
- Fuel
Diesel
Gasoline
- Kerosene
and
Light Oils
- Water and
Water Based
Fluids

	LX-1300 Lever Action Bucket Pump	LX-1302 Grease Gun Filler Pump	LX-1316 Lever Action Barrel Pump	LX-1317 Deluxe, Aluminum Lever-action Barrel Pump	LX-1318 Rotary Barrel Pump	LX-1320 Deluxe, Rotary Barrel Pump	LX-1321 Corrosion Resistant Rotary Barrel Pump	LX-1322 Dual-direction Barrel Pump	LX-1330 Steel Barrel Pump	LX-1331 Stainless Steel Barrel Pump	LX-1332 Lift-action, Polypropylene Pump	LX-1334 Lift-action, Nylon Pump	LX-1336 Plastic Bucket Pump	LX-1344 Hand Transfer Pump
Acids (Weak and Strong)							✓						✓	
Alcohols				✓			✓			✓			✓	
Alkalis							✓			✓			✓	
Anti-freeze			✓	✓			✓			✓	✓	✓	✓	
Automotive Additives	✓		✓	✓	✓	✓	✓	✓	✓	✓	✓	✓	✓	✓
Benzene							✓			✓			✓	
Chemicals (Aggressive)							✓						✓	
Chemicals (Mild)							✓			✓	✓	✓		
Cleaning Solutions				✓		✓	✓		✓	✓	✓	✓		✓
Corrosive Fluids (Mild)							✓			✓	✓	✓		
Corrosive Fluids (Strong)							✓						✓	
Detergents			✓	✓			✓				✓	✓		
Diesel Fuel			✓	✓	✓	✓	✓	✓	✓	✓	✓	✓	✓	
Disinfectants			✓	✓			✓			✓	✓	✓	✓	
Edible Oils							✓			✓	✓	✓	✓	
Edible Fluids (Juice, Wine etc.)							✓			✓	✓	✓	✓	
Esters							✓			✓		✓	✓	
Ethyl							✓			✓		✓	✓	
Farm Chemicals							✓			✓		✓	✓	
Fertilizers							✓			✓		✓	✓	
Gasoline				✓			✓	✓	✓	✓		✓	✓	
Grease		✓												
Heating Oil	✓		✓	✓	✓	✓	✓	✓	✓	✓	✓	✓	✓	✓
Herbicides							✓			✓		✓	✓	
Hydrocarbons							✓							
Industrial Chemicals							✓			✓		✓	✓	
Insecticides							✓			✓		✓	✓	
Kerosene			✓	✓	✓	✓	✓	✓	✓	✓	✓	✓	✓	✓
Laquer Thinner							✓			✓		✓	✓	
Machine Oils				✓	✓	✓	✓	✓	✓	✓	✓	✓	✓	✓
Motor Oil	✓		✓	✓	✓	✓	✓	✓	✓	✓	✓	✓	✓	✓
Oil based Fluids	✓		✓	✓	✓	✓	✓	✓	✓	✓	✓	✓	✓	✓
Oils (Heavy)			✓	✓	✓	✓	✓							
Oils (Light)	✓		✓	✓	✓	✓	✓	✓	✓	✓	✓	✓	✓	✓
Soaps	✓		✓	✓		✓	✓	✓	✓	✓	✓	✓	✓	
Solvents							✓			✓		✓	✓	
Thinners							✓			✓		✓	✓	
Transmission Oil	✓		✓	✓	✓	✓	✓	✓	✓	✓	✓	✓	✓	✓
Water & Water based Fluids				✓			✓			✓	✓	✓	✓	✓

CAUTION : Be sure to remove pump from container when not in use to prevent unintentional siphon action or unauthorized use



Lumax® manual pumps are available in a wide range of types and capacities to meet your specific lubrication and maintenance requirements. Lumax® manual pumps provide economical and convenient dispensing when air operated units are not practical. Lumax® pumps are precision engineered to ensure that they are stronger and durable for heavy-duty service and trouble-free performance. Lumax® pumps are manufactured from the highest-grade materials and to rigid quality standards. Designed for Durability, Reliability, and Safety. Lumax® pumps are ideal for Automotive, Farm, Construction, Commercial or Industry use.



LX-1300

LX-1300 Lever-action Bucket Pump

- Smooth, easy pumping action dispenses all types of Lubricants, even in the coldest weather. Ideal for transferring Motor Oil, Transmission Fluid, Differential Fluid and other Automotive Additives
- Portable - Clamps to any 25-50 lb. (11.5-23 kg.) / 5 Gallon (20 l) Pail
- All Steel Pump. 1-1/2" (40 mm) Inlet and 1/2" (12 mm) Outlet Port
- Heavy-duty, LuCast™, Cast-Alloy Head with Heavier and Reinforced Wall Thickness for Extra Strength and Durability
- Zinc Plated, Corrosion-resistant Suction Tube
- Oil-resistant, Contoured Grip for Comfort and Firm Grip
- Self Priming. Delivers 1 Quart (0.95 l) / 32 fl. oz. (910 g) per 12 Strokes
- Unit Includes : 18" (45 cm) long by 1-1/2" (40 mm) diameter Suction Tube with Rust Resistant 12" (30 cm) Ribbed Cover Assembly with adjusting screws to accommodate variations in drum diameter and 5 ft. (1.5 m) Oil Resistant Flex Hose with Curved Nozzle
- Net Weight : 6 lb. (2.7 kg.)
- Packaged - 1/Box, 5/Carton

LX-1302 Grease Gun Filler Pump

- For Bulk Loading Grease Guns equipped with LX-1420, Lumax® Filler Nipple
- Fast, Easy and Positive Grease Refilling with simple Pumping Action
- Filler Socket helps eliminate Waste, Mess and Air Pockets while refilling Grease in Grease Guns
- Portable — Clamps to any 25-50 lb. (11.5-23 kg.) / 5 Gallon (20 l) Pail
- Heavy-duty, LuCast™, Cast-Alloy Head with Heavier and Reinforced Wall Thickness for Extra Strength and Durability
- All Steel Construction. 1-1/2" (40 mm) Inlet Port
- Oil-resistant, Contoured Grip for Comfort and Firm Grip
- Zinc Plated, Corrosion-resistant Suction Tube
- Self Priming. Delivers 1 lb. (450 g) per 6 strokes
- Unit Includes : 18" (45 cm) long by 1-1/2" (40 mm) diameter Suction Tube with Rust Resistant 12" (30 cm) Ribbed Cover Assembly with adjusting screws to accommodate variations in drum diameter, Follower Plate (LX-1306) and Grease Gun Filler Socket (LX-1305)
- Optional Larger Filler Socket (LX-1305P) Available
- Net Weight : 7 lbs. (3.2 kg)
- Packaged - 1/Box, 5/Carton



LX-1302

LX-1310 Universal Bearing Packer, Plastic

LX-1312 Deluxe, Universal Bearing Packer, Steel

- Universal — for use on all Grease Guns. Lightweight yet, rugged construction
- Threaded Center Post for Positive Locking. Easily Lubricates most Bearings
- Primes easily and pumps efficiently when using Heavy Greases at low temperatures
- Can be used with either Hand-operated or Power Lube Equipment
- Ideal for use on Passenger Car, Light Truck, Farm Vehicle, Boat, Trailer and RV Bearings having a minimum I.D. of 1/2" (13 mm) to a maximum O.D. of 4.5" (113 mm) for LX-1310 and 5" (125 mm) for LX-1312 with height from 1/4" (6 mm) to 2" (50 mm)



LX-1310



LX-1312

LX-1316 Heavy-duty, Lever-action Barrel Pump

- Designed for fast transfer of Non-Corrosive Fluids, such as, Heating Oil, Motor Oil, Transmission Fluid, Automotive Additives, Oils (Light and Heavy), Soaps, etc.
- Fits 15-55 Gallon (57-210 l) Drums with Standard 2" (50 mm) and 1-1/2" (38.1 mm) Bung Opening
- Unique Toggle Mechanism Design uses Compound Leverage for Pumping with little effort — Delivers Fast transfer of Fluids
- Heavy-duty, LuCast™ Cast-Alloy Head with Heavier and Reinforced Wall Thickness for added Strength
- Longer Lever Handle assures firm Grip and increased Leverage — Develops more pressure with less effort
- Cushioned, Oil Resistant Grip with Non-slip finger Contours for Comfort and Safer Operation
- Heavy Gauge Steel Pump Body (18 G / 1.3 mm) wall thickness with Durable Electrostatic, Corrosion-resistant finish
- Heavy-duty Piston for Durability and Longer Life
- Precision Seal eliminates by-pass and Floating Steel Check Valve drains Liquid when not in use
- Self-Priming
- Equipped with 1-1/2" (40 mm) and 2" (50 mm) Bung Bushing and 34" (86 cm) Self-adjusting Zinc Plated, Telescopic Suction Tube for pumping contents from 15 to 55 gallon (57-210 l) drums
- 1-1/4" (32 mm) Inlet Port and 3/4" (19 mm) Outlet Port
- Removable Metal Spout is threaded to fit all Garden Hoses
- Delivers 13 oz. (390 ml) per Stroke
- Net Weight : 5.5 lbs. (2.5 kg)
- Packaged - 1/Box, 6/Carton



LX-1316



Pumps

LX-1317 Deluxe, Aluminum Lever-action Barrel Pump

- Ideally suited for Heavy-duty Service and Trouble-free Performance
- Manufactured from the Highest-grade Materials for extra Durability
- Heavy-duty, Aluminum Pump Body for Durability and Strength
- Stronger and Durable Construction helps protect the Pump from wear and tear due to constant use
- Designed for fast transfer of Fluids, such as, Gasoline, Diesel, Kerosene, Heating Oil, Gear Oils, Motor Oil, Transmission Fluid, Lubricants, Alcohols, Anti-freeze, Automotive Additives, Oils (Light and Heavy), Water and Water based Chemicals
- Fits 15-55 Gallon (57-210 l) Drums with Standard 2" (50 mm) Bung
- Easy Operating Design
- Ergonomically designed Lever Handle increased Leverage — Develops more Pressure with less effort
- Unique Toggle Mechanism Design uses Compound Leverage for Pumping with little effort — Delivers Fast transfer of Fluids
- Cushioned, Oil Resistant Grip with Non-slip finger Contours for Comfort and Safer Operation
- Heavy-duty Piston for Durability
- Self Lubricating Seals
- Self-Priming
- Equipped with 2" (50 mm) Adjustable Bung Bushing and 40" (1 m), Zinc Plated, Suction Tube for pumping contents from 15 to 55 Gallon (57-210 l) Drums
- 1-1/2" (40 mm) Inlet Port and 3/4" (19 mm) Outlet Port
- Delivers 20 oz. (600 ml) per Stroke
- Net Weight : 7.7 lbs. (3.5 kg)
- Complete with Covered Drip Tray — returns Spills back in the Container



LX-1317



Pumps



LX-1318



LX-1318 Rotary Barrel Pump

- For transferring Non-Corrosive, Petroleum based Fluids, of Light to Medium Viscosity - like, Motor Oils, Heavy Oil, Transmission Fluid, Heating Oils and Machine Oil, etc., Kerosene or Diesel Fuel
- Ideal for Commercial, Automotive, Farm and Industrial Applications
- Fits 15 to 55 Gal. Drums (57 to 210 l) with Standard 2" (50 mm) Bung Opening
- Heavy-duty Cast Iron Pump Housing. Zinc Plated, Corrosion-resistant Suction Tube
- Self Priming. Cast Iron Draw Head with S.S. Filter Screen and three Heavy Duty Vanes allow better draw and smooth delivery of Fluids
- Non-slip, Oil Resistant Grip for Comfort and Safer Operation
- Comes with Adjustable 2" (50 mm) Bung Bushing and 39" (1 m) Flexible, Oil-resistant Discharge Hose
- 1-1/4" (32 mm) Inlet Port and 3/4" (19 mm) Outlet Port
- Discharge Capacity : One Gallon (3.8 l) per 14 Revolutions
- Pump Height : 4.3 ft (1.3 m). Maximum Discharge Height : 16.5 ft. (5 m), Net Weight : 13 lb. (6 kg.) Packaged - 1/Box, 4/Cartron

LX-1320 Deluxe, Heavy-duty, Rotary Barrel Pump

- Precision Engineered, Heavy Duty Aluminum Die Cast Body Pump for transferring Non-corrosive Petroleum based fluids of Light to Medium Viscosity.
- Ideal for use in Industrial, Automotive and Agricultural applications
- Fits 15 to 55 Gal. Drums (57 to 210 l) with Standard 2" (50 mm) Bung Opening
- 40" (1 m) long Zinc Plated, Corrosion-resistant Suction Tube
- Self Priming. Heavy-duty Vanes allow better draw and smooth delivery of Fluids
- Non-slip, Oil Resistant Grip for Comfort and Safer Operation
- Comes with Adjustable 2" (50 mm) Bung Bushing and with 39" (1 m) Flexible, Oil-resistant Discharge Hose
- 1-1/4" (32 mm) Inlet Port and 1" (25 mm) Outlet Port
- Discharge Capacity : One Gallon (3.8 l) per 12 Revolutions
- Pump Height : 4.3 ft (1.3 m). Maximum Discharge Height : 16.5 ft. (5 m), Net Weight : 7.5 lbs. (3.4 kg) Packaged - 1/Box, 4/Cartron

LX-1321 Rotary Barrel Pump, Corrosion Resistant

- Made from advanced Non-oxidation and Rust-resistant materials — Stainless Steel & PolyPhenylene Sulfide (P.P.S.), this pump is ideal for transferring Corrosive Fluids, Volatile & Aggressive Chemicals, Acids, Hydrocarbons, Alkali, Edible Liquids, Minerals, Water Based Chemicals, Soaps, Waxes, etc. **Not suitable for use with Chlorine.**
- Also suitable for transferring Petroleum based Fluids of Light to Medium Viscosity, such as, Automotive Additives, Diesel, Kerosene, Solvents, Thinners, Benzene, Cleaning Solutions, Lacquer Thinner
- Fits 15 to 55 Gal. Drums (57 to 210 l) with Standard 2" (50 mm) Bung Opening
- Has Adjustable 1-1/2" (40 mm) and 2" (50 mm) Bung Bushing
- Self Priming and Leak-proof Fittings
- 40" (1 m) long by 1-1/4" (32 mm) diameter, Heavy Duty, Corrosion-resistant Stainless Steel Suction Tube (# 304)
- Teflon Vanes allow better draw & smooth delivery of Fluids
- Non-slip, Oil Resistant Grip for Comfort and Safer Operation
- 1-1/4" (32 mm) Inlet Port and 1" (25 mm) Outlet Port
- Maximum Recommended Viscosity : 2000 ssu
- Maximum Recommended Temperature : 200° F (93° C)
- Discharge Capacity : One Gallon (3.8 l) per 14 Revolutions
- Pump Height : 4.3 ft (1.3 m). Maximum Discharge Height : 16.5 ft. (5 m), Net Weight : 6.6 lbs. (3 kg) Packaged - 1/Box, 6/Cartron

LX-1321



LX-1320



LX-1322 Premium, Dual-direction Barrel Pump

- A Precision built pump designed to meet the demanding requirements of most Automotive, Agricultural, Marine, Truck, and Industrial needs
- Fits 15 to 55 Gal. Drums (57 to 210 l) with Standard 2" (50 mm) Bung Opening
- Manufactured from the Highest-grade Materials for Heavy-duty Service and Trouble-free performance
- Excellent for transferring Non-corrosive Petroleum based fluids of Light to Medium Viscosity, such as, Anti-freeze, Diesel, Kerosene, Lube, Fuel and Machine Oils, etc.
- Counter clockwise and clockwise operation for Discharging or Suctioning freely - works as a Delivery or Suction Pump. Perfect for transferring fluids in either direction
- Heavy-duty Aluminum Die Cast Body Pump for extra Strength
- Stronger and Durable Construction helps protect the Pump from wear and tear due to constant use
- Self Priming
- Durable Draw Head with Nylon Filter Screen and Heavy Duty Vanes allow better Draw and Smooth Delivery of Fluids
- 40" (1 m) long Aluminum Suction Tube with Zinc Plated Steel Outlet Tube, for Maximum Protection against Corrosion
- Non-slip, Oil Resistant Grip for Comfort and Safer Operation
- Comes with Adjustable 2" (50 mm) Bung Bushing and with Spiral 4 ft. (1.2 m) Discharge Hose
- 1-1/4" (32 mm) Inlet Port and Outlet Port
- Discharge Capacity : 36 fl. oz. (1 l) per Revolution
- Vertical Conveying Distance of 50 ft. (15 m), Horizontal Conveying Distance of 150 ft. (50 m)
- Pump Height : 4.3 ft (1.3 m)
- Net Weight : 13 lbs. (6 kg)
- Packaged - 1/Box, 4/Cartron

LX-1322



LX-1330 Lift-action, Steel Barrel Pump

- Zinc-Plated Steel Barrel Pump for transferring Non-corrosive Fluids of Light to Medium Viscosity like, Motor Oils, Transmission Fluid, Heating Oils, Machine Oil, Automotive Additives, Cleaning Solutions, Anti-Freeze, Diesel Fuel, Kerosene, etc.
- Fits 55 Gallon Drums (210 l) with Standard 2" (50 mm) Bung Opening
- Self Priming
- Die-cast Head with Curved Metal Spout
- Precision Buna-n Seal eliminates by-pass and Floating Steel Check Valve drains Liquid when not in use
- Steel Piston for Durability
- Comes with Adjustable 2" (50 mm) Bung Bushing
- Zinc Plated, Corrosion-resistant Suction Tube
- Discharge Spout can be rotated 180° and can be removed to expose Garden Hose threaded outlet
- Discharge Capacity : 22 Fl. oz. (625 g) per Stroke
- 1-1/2" (38 mm) Inlet Port and 3/4" (19 mm) Outlet Port
- Pump Height : 42" (1.1 m)
- Net Weight : 4.5 lb. (2 kg.)
- Packaged - 1/Box, 12/Cartron

LX-1330





LX-1331

LX-1331 Lift-action, Stainless Steel Barrel Pump

- Ideal for transferring Corrosive Fluids, such as, Soluble, Corrosive, Volatile and aggressive Chemicals such as Esters, Alcohols, Alkali, Strong Acids, Hydrocarbons, Edible Liquids (Juice, Milk, Wine, Water, etc), Minerals, Water Based Chemicals, Soaps, Waxes, etc.
- Also suitable for transferring Petroleum based fluids of Light to Medium Viscosity, such as, Automotive Additives, Diesel, Lube Oils, Kerosene, Solvents, Thinners, Benzene, Cleaning Solutions, Fuel Oils, Transmission Fluid, Machine Oils, Lacquer Thinner, Motor Oil, etc.
- Fits 55 Gal. Drums (210 l) with Standard 2" (50 mm) Bung Opening
- Comes with Adjustable 2" (50 mm) Bung Bushing
- Stainless Steel Head and Spout
- Leak-proof Fittings
- Self Priming
- Heavy Duty, Stainless Steel Suction Tube (# 304) and Teflon Piston, for Durability and Maximum Protection against Corrosion
- Heavy Duty Teflon Seals eliminates by-pass and Floating Steel Check Valve drains Liquid when not in use
- Maximum Recommended Viscosity : 2000 ssu
- Maximum Recommended Temperature : 200° F (93° C)
- Discharge Spout can be rotated 180° and can be removed to expose Garden Hose threaded outlet.
- 1-1/2" (38 mm) Inlet Port and 3/4" (19 mm) Outlet Port
- Discharge Capacity : 22 fl. oz. (625 g) per Stroke
- Pump Height : 42" (1.1 m)
- Net Weight : 4.5 lb. (2 kg.)
- Packaged - 1/Box, 12/Carton

WARNING : Although Gasoline is oil based, it is Explosive & Extremely Dangerous to pump. Ground Wires are essentially required for Gasoline and Flammables

LX-1332 Lift-action, Polypropylene Pump, for 15-55 Gallon drums with 2" Bung

- Lightweight, Portable Hand Pump designed to fit 15 to 55 Gal. Drums (57 to 210 l)
- Polypropylene is ideal for pumping Detergents, Anti-Freeze and other Mild Chemicals
- Comes with 2" (50 mm) Bung Bushing for Standard Drum and Tank Opening
- Includes removable Discharge Spout
- Nickel Plated, Steel Piston for Maximum Protection against Corrosion
- Pumps 8 oz. (240 ml) of Liquid per Stroke
- Recommended Viscosity not to exceed that of SAE 30 Weight Oil
- 3/4" (19 mm) Outlet Port
- Pump Height : 43" (109 cm)
- Net Weight : 2 lbs. (90 g)
- Packaged - 1/Box, 12/Carton

LX-1334 Lift-action, Nylon Pump, for 15-55 Gallon drums with 2" Bung

- Same features as LX-1332, but, made of Nylon materials
- Nylon is ideal for pumping Stronger Chemicals and Solvents, such as, Acetates, Ketones, Lacquers, MEK and Thinners. Also suitable for edible products, such as, Cooking Oils
- Stainless Steel Piston for Maximum Chemical Resistance
- Pumps 8 oz. (240 ml) of Liquid per Stroke
- Recommended Viscosity not to exceed that of SAE 30 Weight Oil
- Pump Height : 43" (109 cm)
- Packaged - 1/Box, 12/Carton



LX-1332

LX-1334



LX-1336 Plastic Bucket Pump with Flex Hose and Non-drip Nozzle

- Plastic Bucket Pump with Zinc-Plated Steel Tube for transferring Non-corrosive Fluids of Light to Medium Viscosity like, Engine Oil, Gear Oils, Transmission Fluid, Automotive Additives, Machine Oil, etc.
- Self Priming, Push-down Action Pump
- 5 Gallon (20 l) Capacity
- Drain-back Nozzle prevents Spills and Accidents
- Precision Buna-n Seal eliminates by-pass
- Nylon Piston for Durability
- Zinc Plated, Corrosion-resistant Suction Tube
- Includes : 50" (1.3 m) Oil-resistant Flex Hose with Non-drip Nozzle
- 1" (25 mm) Inlet Port and 1/4" (6 mm) Outlet Port
- Discharge Capacity : 3 oz. (85 g) per Stroke
- Pump Height : 20" (50 cm) / • Net Weight : 1.8 lb. (820 g)
- Packaged - 1/Box, 6/Carton



LX-1336

LX-1344 Hand Transfer Pump

- Ideal for Transferring Fluids from one container to the other and for Draining Oils and other Fluids
- Easy Pumping Action allows Smooth Transfer of Non-corrosive Fluids, such as, Motor and Grease Oil, Transmission Fluid, Cleaning Fluids, Agricultural and Industrial Chemicals
- Ideal for Automotive, Commercial, Industrial and Agricultural applications
- Self Priming
- Heavy Gauge Steel Pump Body (18 G / 1.3 mm) wall thickness with Durable, Corrosion-resistant Finish
- Durable, Oil Resistant O-rings
- Double Check Valve
- 8 ft. (2.45 m) Soft Vinyl Hose for Suction and Discharge of Fluids
- Discharge Capacity : One Gallon (3.8 l) per 8 Strokes
- Packaged - 1/Box, 12/Carton



LX-1344

LX-1346 Brake Fluid Pump

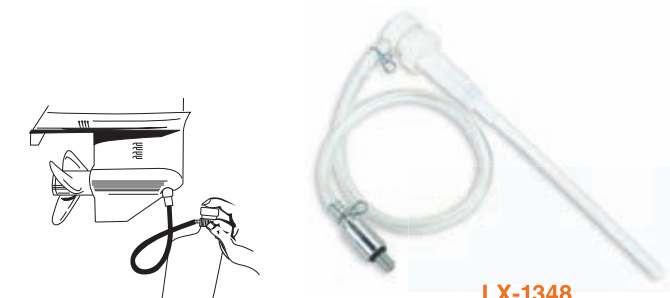
- Designed to pump most Non-corrosive fluids from one Gallon (3.8 l) cans such as Brake Fluid, Power Steering Fluid, etc.
- Fastens directly onto Can
- Comes with a 40" (1 m) Hose with Check Valve for an Air-tight Seal
- Furnished with four Cap sizes to fit most standard one Gallon, Plastic and Metal Containers
- 3" Extension for Taller, Deeper Cans
- Discharge Capacity : 1 fl. oz. (28 g) per Stroke
- Packaged - 1/Box, 12/Carton



LX-1346

LX-1348 Small Engine & Marine Lower Unit Filler Pump

- For adding Fluids to Marine Lower Units
- Fits Standard Quart Bottles
- Comes with Standard 3/8"-16 Adapter
- Includes Flexible Hose for Hard-to-reach Plugs
- Remove adapter on hose end to fill hard-to-reach places like — to add bar Oil on Chainsaw, Fill Oil — on Moped, Lawn mowers, Generator, etc.
- Replaceable Adapters available : 3/8"-16 (LX-1350) and 8 mm (LX-1352)
- Packaged - 1/Box, 10/Carton



LX-1348



LX-1700

LX-1702

Galvanized Steel Funnels

- Heavy-duty Construction for Rugged use
- Rolled edge, High, Splash-proof Rim
- Grooved Spouts for Air-venting
- Fluted Bottom to prevent Swirling
- Bright Zinc Galvanized Corrosion-resistant Finish
- Comes complete with Fine-mesh S.S. Strainer

Model	Capacity	Opening Diameter	Length of Spout	Spout Opening	Overall Height
LX-1700	1 Qt. (0.95 l)	6-1/2"	2-1/2"	3/4"	7"
LX-1702	2 Qt. (1.9 l)	8-1/2"	3-1/4"	1/2"	8"
LX-1706	6 Qt. (5.7 l)	8-1/2"	3-1/4"	1-1/8"	14-1/2"
LX-1708	8 Qt. (7.6 l)	9-1/2"	3-3/4"	1-1/4"	11-1/2"
LX-1708T	8 Qt. (7.6 l)	9-1/2"	3-3/4"	1-1/4"	11-1/2"



LX-1706

LX-1708

LX-1708T Galvanized Tractor Funnel with Locking Tabs and Screen, 8 Quart

- Same as LX-1708, but, has stabilizing Locking Tabs on the Spout

LX-1704 Galvanized Funnel with Flexible Pipe and Screen

- Heavy-duty Galvanized Steel Construction
- Comes complete with Fine-mesh S.S. Strainer
- The most popular all-purpose Fluid Dispenser
- Ideal for adding Transmission Fluid
- 12" (30 cm) Flex Metal Spout with Taper Tip for Hard-to-reach Spots



LX-1708T

LX-1704

LX-1705 Steel Transmission Funnel with Screen 18" x 1/2" Flexible Pipe

- Offset Design - High, Splash-Proof Rim
- Durable Epoxy Finish to Resist Rust
- Comes complete with Fine-mesh S.S. Strainer
- 18" (45 cm) Flexible Spout with Tapered Tip for ease of Pouring



LX-1705

LX-1600



LX-1602

LX-1604

Plastic Utility Funnels

- Rugged, Corrosion Resistant, All-purpose Funnels
- Durable, Oil Resistant Plastic. Safe for all Petroleum Products
- Complete with handy storage Hanging Tabs
- LX-1606 and LX-1608 comes with S.S. Strainer

Model	Capacity	Opening Diameter	Length of Spout	Spout Opening	Overall Height
LX-1600	8 oz. (240 ml)	4-1/2"	1-1/2"	1/2"	4-1/2"
LX-1602	16 oz. (480 ml)	5-1/4"	1-1/4"	3/4"	5"
LX-1604	48 oz. (1.4 l)	8"	2-1/4"	3/4"	7"
LX-1606	2 Qt. (1.9 l)	6-1/2"	2-1/2"	1"	8-1/2"
LX-1608	6 Qt. (5.7 l)	8-1/2"	1-1/2"	1-1/4"	10-1/4"



LX-1606

LX-1608

LX-1610 Flexible Pour Spout

- Multi-purpose Flexible Funnel Spout for Automotive, Home, Farm, Marine and other uses
- Two Thread Sizes to fit most Containers
- Screws to Funnel or directly to Motor Oil, Anti-freeze, Windshield Washer Fluid, Transmission, Power Steering Fluid Containers
- Complete with Stopper Cap with Loop — can be used as a Hang Tab



LX-1610

LX-1609

LX-1609 Two Piece Funnel with Flex Spout

- A Multi-purpose, two-piece Funnel with Detachable Flexible Spout
- Ideal for a Multitude of Applications. Perfect for any Oil change or topping-off Transmission, Anti-freeze or Power Steering Fluids
- Flexible spout is threaded to screw onto most oil containers
- Easy-grip



LX-1612 Multi-Purpose Flex Pour Spout/Funnel Combination

- Same features as LX-1609, but, includes an Easy-grip Handle

Model	Capacity	Opening Diameter	Length of Spout	Spout Opening	Overall Height
LX-1610	-	1-1/2"	9"	1/2"	9"
LX-1609	32 oz. (0.96 l)	4-1/4"	11-1/2"	1/2"	16"
LX-1612	48 oz. (1.4 l)	5-3/4"	11"	1/2"	15-1/4"



LX-1612

LX-1613 Multi-Purpose Combination Funnel, 1-1/2 Qt. with Flex Spout

- Multi-purpose, three-piece funnel
- Large Funnel with adapter screws for maximum stability
- Comes with long and short spouts for Easy-pouring
- Includes an adapter for large and small openings
- Flexible Spout and Small Tapered Tip Opening is ideal for Transmission Fill Points and Small Engines
- Includes a 3-stage self-storing plug that can seal all size funnel openings. Ensures non-drip, no mess when funnel is not in use.
- Easy to use Handle, for firm Grip
- Ideal for Auto, Marine, Farm, Fleet uses. Perfect for any Oil change, Power Steering
- Fluids, Anti-freeze or filling Transmissions, Radiators, Gas Tanks and other Hard-to-fill openings



LX-1613

LX-1614 Long Neck Funnel

- All purpose utility funnel. Great for hard-to-reach applications
- Extra Long Neck, for Hard-to-reach Spots
- Complete with Hang Tab

Model	Capacity	Opening Diameter	Length of Spout	Spout Opening	Overall Height
LX-1613	48 oz. (1.4 l)	6-1/2"	13-1/4"	1/2"	19"
LX-1614	48 oz. (1.4 l)	4-3/4"	6-3/4"	1/2"	18"

LX-1614

Flow Control Thumb Measures with Flexible Spout

*The only Thumb Measures in the industry that are dust-proof
.....keeps Oil and Lubricants contaminant free!*

- Designed for One-hand Operation
- Thumb Operated Valve Controls Flow - Flip-action locks Valve open
- 14" Flexible Spout with Tapered Tip swings into the necessary angle for hard-to-reach spots
- Self-locking Lid for Dust-Free Operation
- Heavy-duty Construction with Durable, Rust-resistant Epoxy Finish
- Rolled edge top helps prevent Spilling
- Large Refill Opening
- Easy Grip Handle
- Recessed bottom Drains fully and Guards against puncture
- Stable Base helps avoid Spillovers
- Imperial and Metric Calibrated Fill-line Measures
- Individually Packaged



LX-1538

Model	Capacity
LX-1530	1 Qt. / 2 pt. (950 ml)
LX-1532	2 Qt. / 4 pt. (1.9 l)
LX-1534	4 Qt. / 8 pt. (3.8 l)
LX-1536	5 Qt. / 10 pt. (4.75 l)
LX-1538	8 Qt. / 16 pt. (7.6 l)



LX-1528

Galvanized Measures with Flex Spout

- Deluxe Measures with Spill-proof Tops
- Heavy-duty Construction
- Durable Galvanize Finish to resist Rust
- Flexible Spout with Tapered Tip for ease of Pouring
- Large Refill Opening
- Rolled edge, Easy-grip Handles
- Stable Base helps avoid Spillovers
- Imperial and Metric Calibrated Fill-line Measures

Model	Capacity
LX-1524	1 Qt. / 2 pt. (950 ml)
LX-1526	2 Qt. / 4 pt. (1.9 l)
LX-1528	4 Qt. / 8 pt. (3.8 l)

LX-1616 Battery Bulb Filler

- Ideal for all Fluids
- Safe for use with Battery Acid
- 6 oz. (180 ml) Capacity with 6" (150 mm) Flex-spout
- Bulb remains Pliable in Cold Weather



LX-1616

LX-1618 Battery Filler, 2 Qt. / 4 pt. (1.9 l) Capacity

- Tough PE material. Impervious to Oil, Gasoline, Anti-freeze, etc.
- Safe to use with Battery Acid
- Shuts-off Automatically when Battery Cell is at proper level — No Overfilling
- Features Double-action Fast Flow Valve Tip that prevents after-drip
- Stops Surface Discharge caused by a Wet Battery
- Replaceable Spout (LX-1620) available



LX-1618



Battery and Radiator Fillers

- Tough, Polyethylene. Impervious to Oil, Gasoline, Anti-freeze, etc.
- Durable, Oil Resistant Plastic — will not Rust or Dent
- Will withstand normal Temperature Extremes

Model	Capacity
LX-1622	2 Gallon (7.6 l)
LX-1624	2.5 Gallon (9.5 l)
LX-1626	3 Gallon (11.4 l)



LX-1624

LX-1622



LX-1626

LX-1628 Drain Pan

- Rugged, Oil Resistant all-purpose Plastic Pan
- Built-in, Raised Rim Handles
- Durable — will not Rust or Dent. Easy Cleaning
- 12" (300 mm) Diameter, 4" (100 mm) Deep
- 6 Quart (5.7 l) Capacity with Pouring Lip



LX-1628

LX-1629 Oil Drain Pan with Wire Loop Handle, 5 Gallon (19 l) Capacity

- Impervious to Oil, Gasoline, Anti-freeze, etc.
- Tough, Durable, Oil Resistant Plastic — will not rust or dent
- Will withstand normal Temperature Extremes
- Rolled edge cuts down on Splash and makes for ease of carrying while full
- Handle can also be used to push pan under vehicle
- Easy to Clean
- Diameter: 18" (46 cm)
- Height: 5.25" (135 mm)



LX-1629

LX-1631 Anti-freeze Drain Pan, 3.75 Gallon (14 l) Capacity

- 90 Degree Pouring Spout, Splash Guards and Handles
- Impervious to Oil, Gasoline, Anti-freeze, etc.
- Tough Polyethylene, Durable, Oil Resistant Plastic — will not rust or dent
- Will withstand normal Temperature Extremes
- Easy to Clean
- Diameter: 16" (41 cm)
- Height: 6" (150 mm)



LX-1631

LX-1632



LX-1632 Drainmaster, 15 Quart

- Ideal for Oil Recycling
- Drain direct — No Oily Tub, Funnel, or Mess
- Heavy-duty Construction with E-Z Handle Design and E-Z Roll Wheels
- Large 8" (20 cm) Opening with Screw Cap
- No Mess to Clean-up on Top or Side
- Large Drain opening accommodates dirty Oil Filters
- Exclusive O-ring Seal
- Catch-all basket to retrieve Drain Plugs and Filter
- Comes complete with Wheels for Slosh-free mobility

LX-1638



LX-1638 Transmission Pan Adapter for Oil Lift Drains

- Constructed of Heavy Duty, High Density Polyethylene resists Rust and Dents
- Impervious to Oil, Gasoline, Anti-freeze, etc.
- Will not Warp with Hot Oil
- Large 24" (60 cm) Diameter with Wide Base for Stability
- Small Diameter Drain Holes prevent loss of Bolts, Nuts, Washers, etc.
- Fits all Lumax® and other popular Oil Lift Drains

* Illustration Only
- Lift Drain Not Included

LX-1640



LX-1640 Tire and Tube Test Tank

- Durable Plastic Tank for Testing Tubes and Tires
- Made from Rugged Heavy-duty Polyethylene
- Tire Punctures are easy to spot against black Plastic Tank
- Highly Durable — will resist Rust, Dents and Mild Chemicals
- Features Reinforced Ribs for Extra Support
- Lip doubles as a Splash Guard and easy Carrying Handle
- Will handle Passenger Tires to Wide Oval and Light Duty Truck Tires
- Dimensions: 31" x 12" x 12" (790 mm x 300 mm x 300 mm)

LX-1709



LX-1709 Galvanized Drain Pan, 3.5 Gallon (13.5 l) Capacity

- Bright Zinc Galvanized, Corrosion-resistant finish
- Seamless, full drawn Galvanized Steel
- Rolled Rim and Ribbed bottom for extra strength
- 16" (400 mm) Diameter
- 4" (100 mm) Deep

LX-1710



LX-1710 Galvanized Drain Pan, 6 Gallon (23 l) Capacity

- Heavy-duty Construction for Rugged use
- Bright Zinc Galvanized, Corrosion-resistant finish
- Pouring with Anti-splash Baffle prevents Spilling
- Ribbed Bottom for Extra Strength
- Rolled Smooth Edge for extra strength and cuts down on Splash and makes it easy to carry when full
- Includes Handles
- 19" (480 mm) Diameter
- 6" (150 mm) Deep

LX-1712 Metal Oil Lift Drain

LX-1713 Metal Oil Lift Drain with Cross Frame Dolly

- Ideal for draining Waste Oil, Grease and other Automotive Fluids
- Constructed of Heavy-duty Steel
- Powder coated, Epoxy Finish resists Rust
- Wide Base for increased Stability and to eliminate Tipping
- Seamless, Rolled Edge for Extra Strength
- Telescopic tube adjusts to desired height from 42" (1.1 m) to 65" (1.65 m)
- Large, 14" (35 cm) Funnel has built-in strainer to catch Drain Plugs
- Hand-grip for ease in Evacuation
- 5 Gallon (20 l) Capacity

LX-1712



LX-1713



Galvanized Drip Pans

- Rust resistant, Galvanized Sheet Metal Construction
- Rugged, One-piece Heavy Gauge Material
- Rolled Smooth Edges for Extra Strength
- Keeps Garage, Driveways and Automotive Show-room Floors Safe and Clean from Fluid Drippings

Model	Size
LX-1711	Small - 18" x 25" x 1/2" (46 cm x 64 cm x 13 mm)
LX-1715	Large - 47" x 25" x 1/2" (120 cm x 64 cm x 13 mm)

LX-1711



Dollies

- Heavy-duty Construction for Rugged use
- Baked Enamel finish
- Ball Bearing type Swivel Casters
- Comes complete with all Hardware

Model	Size
LX-1716	Cross Frame Dolly, for LX-1712 Metal Oil Lift Drain (5 Gallon Capacity)
LX-1718	Band Dolly 12" (30 cm), for 5 Gal. (20 l) 25-50 lb. (12-23 kg.) Containers
LX-1720	Band Dolly 14" (35 cm), for 16 Gal. (60 l) 120 lb. (55 kg.) Containers
LX-1722	Band Dolly 24" (60 cm), for 55 Gal. (210 l) 400 lb. (180 kg.) Containers

LX-1716



LX-1718



LX-1720



LX-1722



LX-1715





LX-1804



LX-1806



LX-1808



LX-1810



LX-1812



LX-1814



LX-1816



LX-1818

Deluxe, Swivel Filter Wrenches

- Heavy-duty, Steel Construction with Comfortable Vinyl Grip
- Features a Swivel Handle to easily Clear Obstructions
- Ideal for Hard-to-reach Filters
- Wide Band provides Strong Grip and prevents Crushed Filters
- Fits most Standard Car and Truck Filters

Model	Fits Filters from (Sizes)
LX-1804	Small, 2-7/8" to 3-1/2" (73 to 89 mm) Diameter
LX-1806	Large, 3-1/4" to 3-7/8" (83 to 98 mm) Diameter

LX-1808 Adjustable Filter Wrench

- Heavy-duty, Steel Construction with Comfortable Vinyl Grip
- Padded Band provides Non-Slip Grip and prevents Marring
- 4-way Adjustable Band fits a Wide Range of Sizes
- Features a Swivel Handle to easily Clear Obstructions
- Wide Band provides Strong Grip and prevents Crushed Filters
- Fits most Car and Truck Filters from 2-7/8" to 4-1/8" (73 to 105 mm) Diameter

LX-1810 Nylon Strap Oil Filter Wrench

- Universal in Application
- Easily adapts to any Spin-on Filter up to 6" (150 mm) in Diameter
- Strong Nylon Web Strap Grips and holds Filter tight
- Heavy-duty Epoxy Finish Steel Construction
- Use with 1/2" (12.5 mm) Square Drive Socket Wrench

Filter Wrenches

- Universal — Removes and Installs the Filter
- Fits most Cars and Trucks by sizing itself to the Filter
- Designed to fit where Standard Wrenches would not
- Use with 3/8" (9 mm) Sq. Drive, 7/8" (22 mm) Sq. Drive or 1" (25 mm) Wrench

Model	Fits Filters from (Sizes)
LX-1812	Small, 2-3/4" to 3" (70 to 76 mm) Diameter
LX-1814	Large, 3-3/8" to 3-7/8" (86 to 98 mm) Diameter

Heavy-Duty Adjustable Filter Wrenches

LX-1816

- Slim Design fits where many Handled Wrenches would not
- High Carbon Steel Construction for Strength
- Adjustable Tongue and Groove Design
- Comfortable Vinyl Grip Handle
- **Caution** : Comfort Vinyl Grips are only for comfort and are NOT recommended for electrical use

LX-1818

- Chrome Vanadium Steel Construction for Durability
- Adjustable Locking Pliers Design
- Grip in all Directions assures maximum Hold and Non-slip Jaw action
- Bright Nickel Plated Rust-resistant Finish

Model	Fits Filters from (Sizes)
LX-1816	2-3/4" to 4" (70 to 102 mm) Diameter
LX-1818	2-1/8" to 4-5/8" (53 to 118 mm) Diameter



Lumax® has adopted the following identification symbols for the various threads used in the manufacture of its Grease Fittings :

Symbol	Description
N.P.T.	American National Standard Taper Pipe Thread
N.P.T.F.	Dryseal American Standard Taper Pipe Thread
P.T.F.	Same as N.P.T.F. except full thread length has been shortened by one thread on small end of thread - also designated as P.T.F. - SAE Short
P.T.F. Special Short	Same as P.T.F. Short, except, one full thread has been shortened from large end of thread
P.T.F. Special Extra Short	Same as P.T.F. Short, except, two full thread has been shortened from large end of thread
1/4"-28 Taper Thread (SAE-LT)	Thread has a 3/4" Taper per foot and a Pitch Diameter of .2257/.2224 at small end. The mating tapped hole is 1/4"-28 Taper Thread, U.N.F. Class 3B Straight Thread. Tap drill must not exceed .2152" Diameter
1/4"-28 Special Taper Drive Thread	Thread Forming : Forms Thread in mating part during installation. When removed it can be replaced by Standard 1/4"-28 Taper Thread (SAE-LT) Fitting
1/8" Pipe Special Taper Drive Thread	Thread Forming : Forms thread in mating part during installation. When removed it can be replaced by Standard 1/8"-27 P.T.F. Series Fitting

Drill Size Selection

Fitting Thread Size	Tap Drill Selection for Standard Thread Fittings	*Drill Size Selection for Spin Drive Fittings
1/4" - 28	#3 (for Soft Metal, use #5)	"A" - .234" Dia.
5/16" - 32	9/32" (for Soft Metal, use "J")	-
1/8" Pipe	11/32" (for Soft Metal, use "R")	3/8 - .375" Dia.
1/4" Pipe	7/16"	-

* Drill sizes given are nominal and may vary with different types of material. For maximum effectiveness, test applications should be conducted using the type of material into which the fitting is to be installed (Aluminum, Brass, Bronze, Cast Iron, Copper, Steel etc.)

Symbol	Designation	Symbol	Designation
N	American National Standard	P	Pipe
T	Taper	S	Straight
LT	Lubrication Thread		

Conversion Table

Inches		Metric	Inches		Metric	Inches		Metric	Inches		Metric
Decimal	Fraction	(mm)	Decimal	Fraction	(mm)	Decimal	Fraction	(mm)	Decimal	Fraction	(mm)
.01563	1/64	0.40	.26563	17/64	6.75	.51563	33/64	13.10	.76563	49/64	19.45
.03125	1/32	0.79	.28125	9/32	7.14	.53125	17/32	13.49	.78125	25/32	19.84
.04687	3/64	1.19	.29688	19/64	7.54	.54688	35/64	13.89	.79688	51/64	20.24
.0625	1/16	1.59	.3125	5/16	7.94	.56250	9/16	14.29	.8125	13/16	20.64
.07813	5/64	1.98	.32813	21/64	8.33	.57813	37/64	14.68	.82813	53/64	21.03
.09375	3/32	2.38	.34375	11/32	8.73	.59375	19/32	15.08	.84375	27/32	21.43
.10937	7/64	2.78	.35938	23/64	9.13	.60938	39/64	15.48	.85938	55/64	21.83
.125	1/8	3.18	.375	3/8	9.53	.625	5/8	15.88	.875	7/8	22.23
.14063	9/64	3.57	.39063	25/64	9.92	.64063	41/64	16.27	.89063	57/64	22.62
.15625	5/32	3.97	.40625	13/32	10.32	.65625	21/32	16.67	.90625	29/32	23.02
.17188	11/64	4.37	.42188	27/64	10.72	.67188	43/64	17.07	.92188	59/64	23.42
.1875	3/16	4.76	.4375	7/16	11.11	.6875	11/16	17.46	.9375	15/16	23.81
.20313	13/64	5.16	.45313	29/64	11.51	.70313	45/64	17.86	.95313	61/64	24.21
.21875	7/32	5.56	.46875	15/32	11.91	.71875	23/32	18.26	.96875	31/32	24.61
.23438	15/64	5.95	.48438	31/64	12.30	.73438	47/64	18.65	.98438	63/64	25.00
.25	1/4	6.35	.50	1/2	12.70	.750	3/4	19.05	1.0000	1	25.40

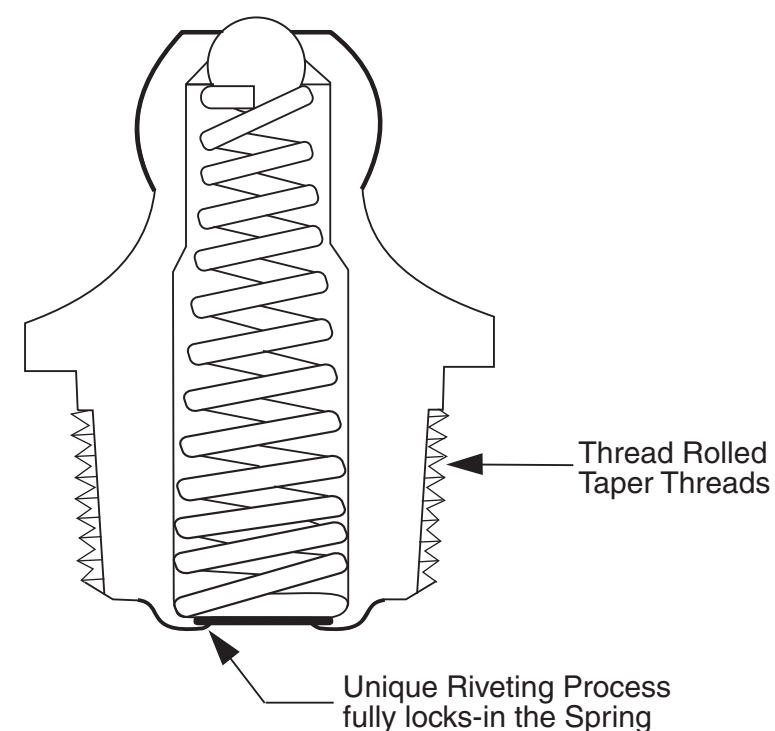
The Lumax® Advantage

Lumax® Grease Fittings are precision engineered to ensure that they are stronger and durable for heavy-duty service and trouble-free performance. Lumax® Grease Fittings are manufactured from the highest-grade materials and to rigid quality standards. All Lumax® Grease Fittings meet the Specifications as per S.A.E. J-534 and various other international standards. Each Grease Fitting goes through several Quality Control checks to assure the highest quality level :

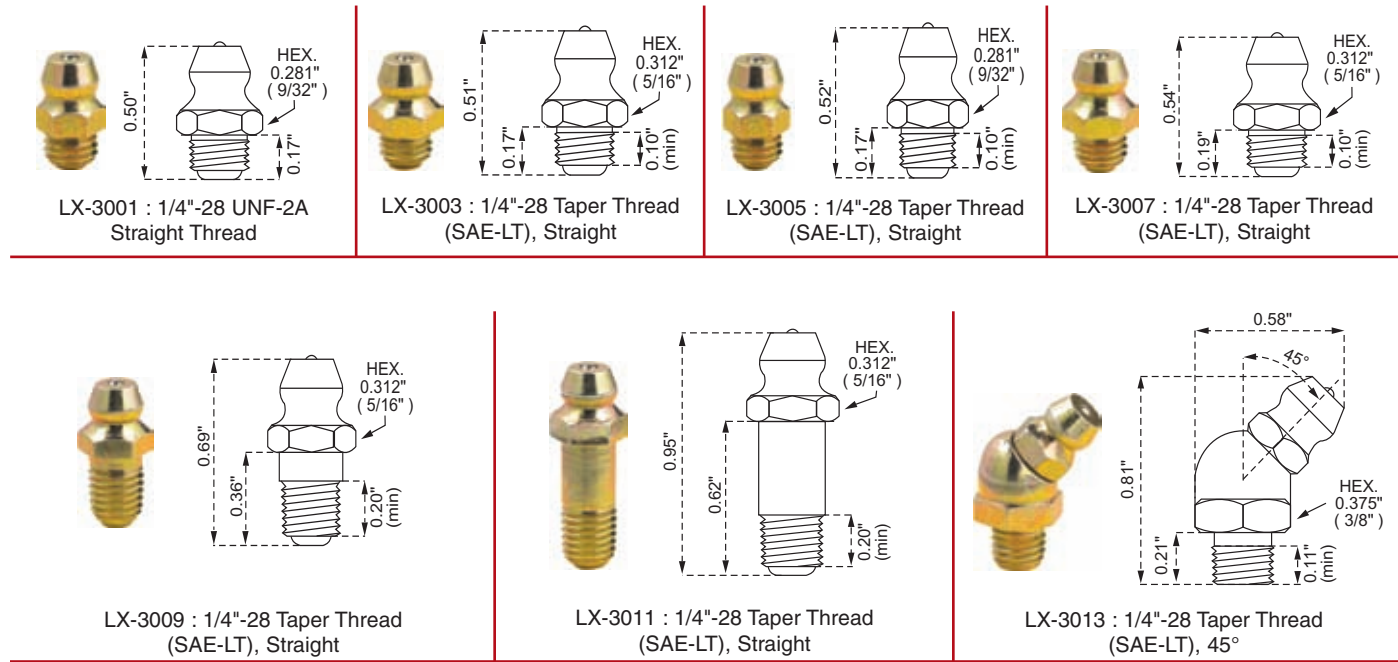
- Fully Hardened for extra Durability and to protect them from wear due to constant use
- Ball Check in the head prevents dirt and grit from getting into the Fitting
- Heavier Wall Thickness for Extra Strength
- Zinc Plated with Yellow Passivated finish, for Maximum Protection against Corrosion
- Stress Relieved and Tempered Carbon Steel Spring
- Every fitting is individually inspected and Batch Tested to 5,000 PSI
- Designed to meet the demanding requirements of most Automotive, Agricultural, Industrial, Marine, Truck, and Construction Equipment needs
- Apart from standard types, Lumax® offers an extensive line of Specialty Fittings in a variety of grades with threads of Domestic and International Standards, Self-tapping Thread or Drive Type or in Custom design versions
- Lumax® offers all Grease Fittings in Bulk and in a variety of attractive Retail Packaging

Lumax® Exclusive Features

- Thread Rolled taper threads are stronger and durable due to hardening and toughening of threads. This is not achievable in cut thread process, as the threads become brittle on the periphery.
- Dome type Riveting completely covers the Spring enabling the Spring to be firmly secured in its place.



1/4"-28 Thread, Grease Fittings

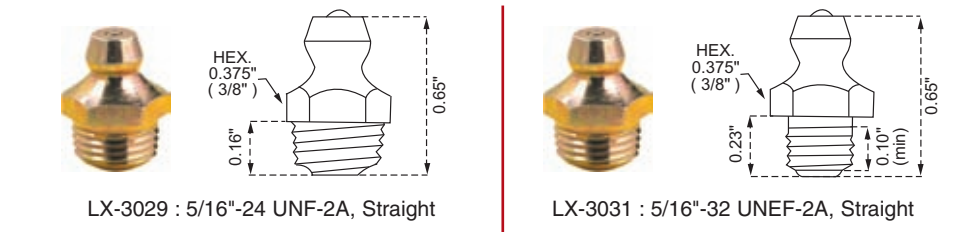


Please Note : Drawings and Images are for guidance only and are not to scale. Refer to Dimensions, for actual size.

Used on most Auto Vehicles and on Industrial Equipment. SAE-LT Threads — conforms to Society of Automotive Engineers Lubrication Thread Specification. Ball Check prevents Dust and Dirt Contamination.

Part No.	Type	Overall Length	Shank Length	Thread Length	Hex Size	Pack (Pcs.)
1/4"-28 UNF-2A						
LX-3001	Straight	0.50"	0.17"	0.10"	0.281" (9/32")	100
1/4"-28 Taper Thread (SAE-LT)						
LX-3003	Straight	0.51"	0.17"	0.10"	0.312" (5/16")	100
LX-3005	Straight	0.52"	0.17"	0.10"	0.281" (9/32")	100
LX-3005-10						10
LX-3007						100
LX-3007-10	Straight	0.54"	0.19"	0.10"	0.312" (5/16")	10
LX-3007-5						5
LX-3009	Straight	0.69"	0.36"	0.20"	0.312" (5/16")	100
LX-3009-10						10
LX-3011	Straight	0.95"	0.62"	0.20"	0.312" (5/16")	100
LX-3011-10						10
LX-3013						100
LX-3013-10	45°	0.81"	0.21"	0.11"	0.375" (3/8")	10
LX-3013-5						5
LX-3015	65°	0.80"	0.29"	0.20"	0.375" (3/8")	100
LX-3019						100
LX-3019-10	90°	0.75"	0.21"	0.10"	0.312" (5/16")	10
LX-3019-5						5

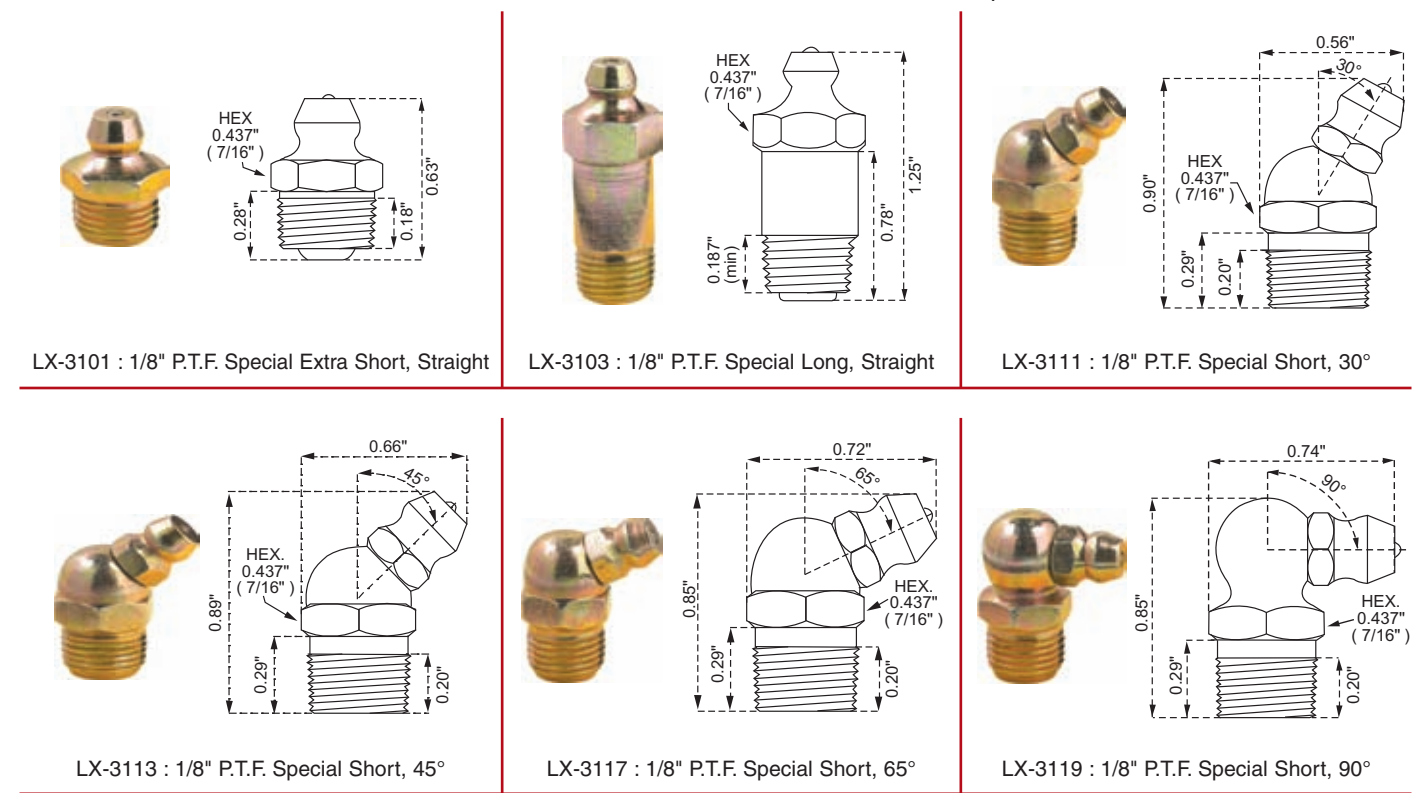
Special Thread, Grease Fittings



1/8" Pipe Thread, Grease Fittings:

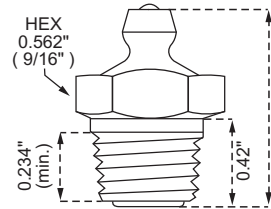
Constructed for additional strength, these fittings are ideally suited for use on Heavy Industrial, Agricultural and Construction Equipment. Ball Check prevents dust and dirt contamination.

1/8" Pipe Thread, Grease Fittings

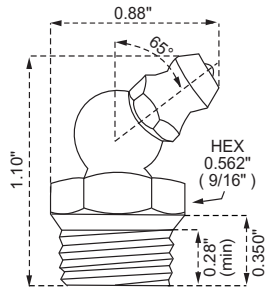


Part No.	Type	Overall Length	Shank Length	Thread Length	Hex Size	Pack (Pcs.)
Special Thread						
LX-3029	Straight	0.65"	0.16"	0.10"	0.375" (3/8")	100
LX-3031	Straight	0.65"	0.23"	0.10"	0.375" (3/8")	100
1/8" Pipe Thread						
LX-3101-M						1000
LX-3101	Straight	0.63"	0.28"	0.18"	0.437" (7/16")	100
LX-3101-10						10
LX-3101-5						5
LX-3103	Straight	1.25"	0.78"	0.187"	0.437" (7/16")	100
LX-3103-10						10
LX-3111	30°	0.90"	0.29"	0.20"	0.437" (7/16")	100
LX-3113						100
LX-3113-10	45°	0.89"	0.29"	0.20"	0.437" (7/16")	10
LX-3113-5						5
LX-3117	65°	0.85"	0.29"	0.20"	0.437" (7/16")	100
LX-3119						100
LX-3119-10	90°	0.85"	0.29"	0.20"	0.437" (7/16")	10
LX-3119-5						5

1/4" Pipe Thread, Grease Fittings



LX-3201 : 1/4" P.T.F. Special Extra Short, Straight

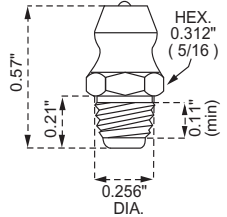


LX-3203 : 1/4" P.T.F. Special Extra Short, 65°

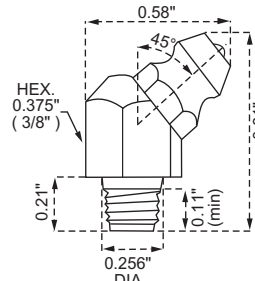
Commonly used for larger bearings on Heavy Industrial and Farm Machinery and Equipment. Highly recommended for heavy lubricants and in cold weather applications. Ball Check prevents dust and dirt contamination.

Thread Forming (Spin Drive), Grease Fittings

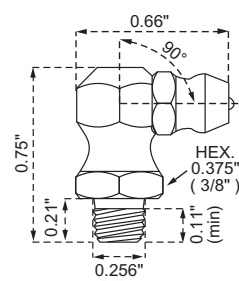
Special, Hardened Tapered Spin Drive Threads reshape the material (forming threads) in an untapped hole and provides an excellent seal. Ideally suited for fast production line installation in untapped holes to save tapping cost. Effectively installed by spinning or may be driven straight into the untapped hole. Thread Forming Fittings can be replaced by any Standard Threaded Fitting. **Please note** : Thread Forming Fittings are not recommended for heat treated parts.



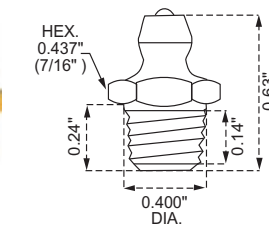
LX-3401 : 1/4"-28 Special Taper Drive Thread, Straight



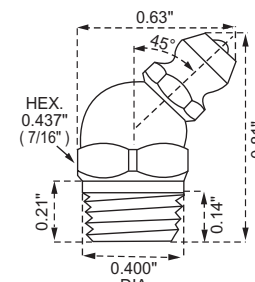
LX-3403 : 1/4"-28 Special Taper Drive Thread, Hex Head, 45°



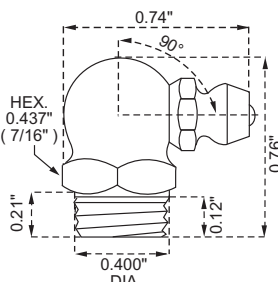
LX-3405 : 1/4"-28" Special Taper Drive Thread, Hex Head, 90°



LX-3407 : 1/8" Pipe Special Taper Drive Thread, Straight



LX-3409 : 1/8" Pipe Special Taper Drive Thread, 45°

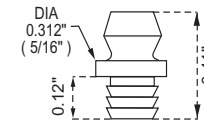


LX-3411 : 1/8" Pipe Special Taper Drive Thread, 90°

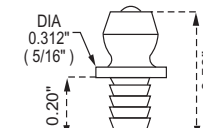
Drive Type, Grease Fittings

Drive Fittings avoid tapping costs in variety of applications. Circumferential Serrated shank provides a Grease tight seal when installed. They also simplify the replacement of damaged fittings in old or oversized holes. Recommended only for low to medium pressure applications. Drive Fittings must be used where high lubricant back pressures can be developed.

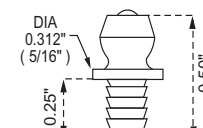
Holes sizes and shank dimensions must be used as reference only. To determine optimum hole size, test applications should be conducted using the type of material into which the fitting is to be installed ex. Aluminum, Brass, Bronze, Cast Iron, Copper, Steel etc. Production tolerances of hole size must be taken into consideration when test is conducted. Use LX-1430 Straight Drive fitting tool or LX-1432 Angled Drive fitting tool to install these fittings



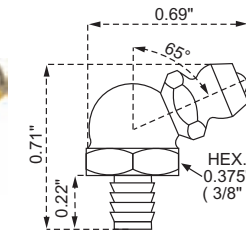
LX-3501 : For 3/16" Dia. Hole, Straight, (without Ball Check)



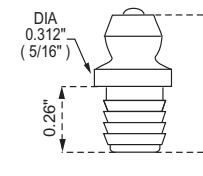
LX-3503 : For 3/16" Dia. Hole, Straight



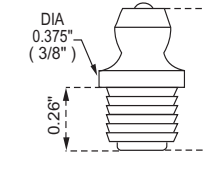
LX-3505 : For 3/16" Dia. Hole, Straight



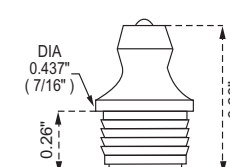
LX-3507 : For 3/16" Dia. Hole, 65°



LX-3509 : For 1/4" Dia. Hole, Straight



LX-3511 : For 5/16" Dia. Hole, Straight



LX-3513 : For 3/8" Dia. Hole, Straight

Drive-in Grease Fitting Tools

- High Strength Steel. Zinc Plated Corrosion-resistant Finish
- 4-1/2" Long, 3/4" Diameter

LX-1430 For use to Install Straight Type Drive-in Fittings

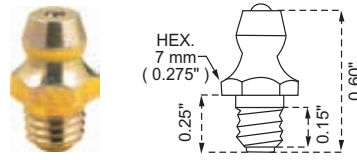
LX-1432 For use to Install Angled Type Drive-in Fittings



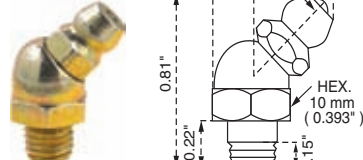
Part No.	Type	Overall Length	Shank Length	Thread Length	Diameter	Pack (Pcs.)
Drive Type						
LX-3501	Straight	0.41"	0.12"	0.12"	0.312" (5/16")	100
LX-3503	Straight	0.50"	0.20"	0.20"	0.312" (5/16")	100
LX-3505	Straight	0.50"	0.25"	0.25"	0.312" (5/16")	100
LX-3505-10						10
(Hex Size)						
LX-3507	65°	0.71"	0.22"	0.22"	0.375" (3/8")	100
LX-3509	Straight	0.56"	0.26"	0.26"	0.312" (5/16")	100
LX-3509-10						10
LX-3511	Straight	0.56"	0.26"	0.26"	0.375" (3/8")	100
LX-3511-10						10
LX-3513	Straight	0.60"	0.26"	0.26"	0.437" (7/16")	100
LX-3513-10						10

Metric Thread, Grease Fittings

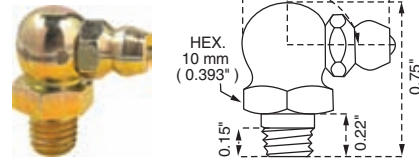
Taper Metric Thread conforms to ISO and German Standard DIN 71412



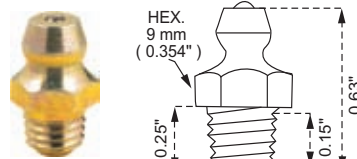
LX-3301 : 6 mm x 1 mm (Pitch) Taper Thread, Straight



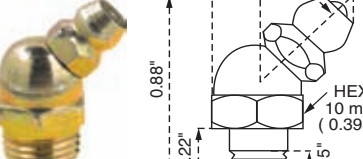
LX-3303 : 6 mm x 1 mm (Pitch) Taper Thread, 45°



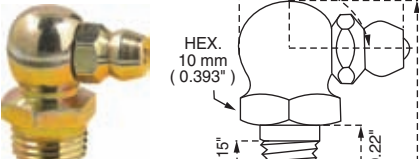
LX-3305 : 6 mm x 1 mm (Pitch) Taper Thread, 90°



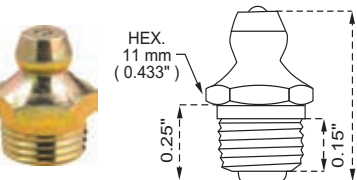
LX-3307 : 8 mm x 1 mm (Pitch) Taper Thread, Straight



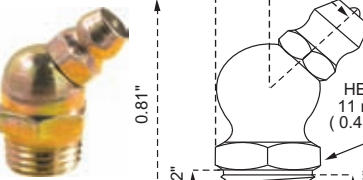
LX-3309 : 8 mm x 1 mm (Pitch) Taper Thread, 45°



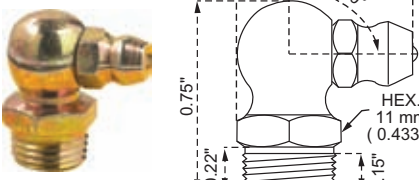
LX-3311 : 8 mm x 1 mm (Pitch) Taper Thread, 90°



LX-3313 : 10 mm x 1 mm (Pitch) Taper Thread, Straight



LX-3315 : 10 mm x 1 mm (Pitch) Taper Thread, 45°

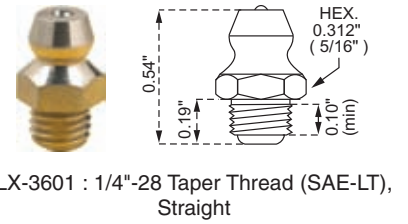


LX-3317 : 10 mm x 1 mm (Pitch) Taper Thread, 90°

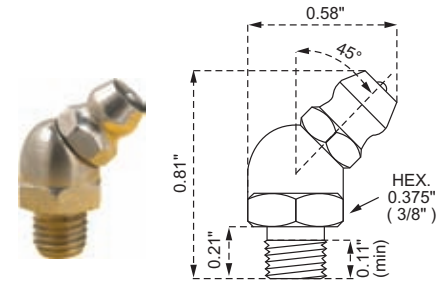
Part No.	Type	Overall Length	Shank Length	Thread Length	Hex Size	Pack (Pcs.)
LX-3301	Straight	0.60"	0.25"	0.15"	0.275" (7 mm)	100
LX-3301-10						10
LX-3301-5						5
LX-3303	45°	0.81"	0.22"	0.15"	0.354" (9 mm)	100
LX-3303-10						10
LX-3303-5						5
LX-3305	90°	0.75"	0.22"	0.15"	0.354" (9 mm)	100
LX-3305-10						10
LX-3305-5						5
LX-3307	Straight	0.63"	0.25"	0.15"	0.354" (9 mm)	100
LX-3307-10						10
LX-3307-5						5
LX-3309	45°	0.81"	0.22"	0.15"	0.354" (9 mm)	100
LX-3309-10						10
LX-3309-5						5
LX-3311	90°	0.75"	0.22"	0.15"	0.354" (9 mm)	100
LX-3311-10						10
LX-3311-5						5
LX-3313	Straight	0.63"	0.25"	0.15"	0.433" (11 mm)	100
LX-3313-10						10
LX-3313-5						5
LX-3315	45°	0.81"	0.22"	0.15"	0.433" (11 mm)	100
LX-3315-10						10
LX-3315-5						5
LX-3317	90°	0.75"	0.22"	0.15"	0.433" (11 mm)	100
LX-3317-10						10
LX-3317-5						5

Stainless Steel, Grease Fittings

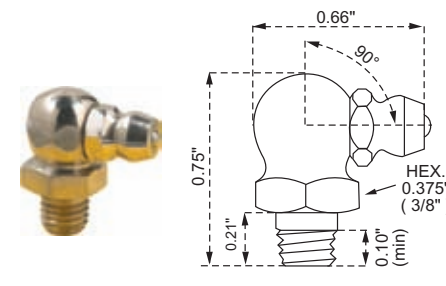
Lumax Stainless Steel fittings withstand the most severe corrosive conditions under which metal equipment can be used - in both marine and industrial applications. Bodies are made of Type 316 Stainless Steel, Balls are of Type 304 Stainless Steel and tampered springs are of Type 302 Stainless Steel.



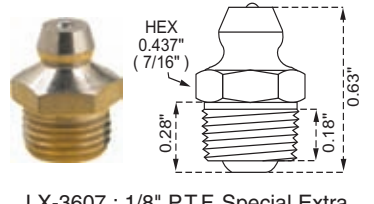
LX-3601 : 1/4"-28 Taper Thread (SAE-LT), Straight



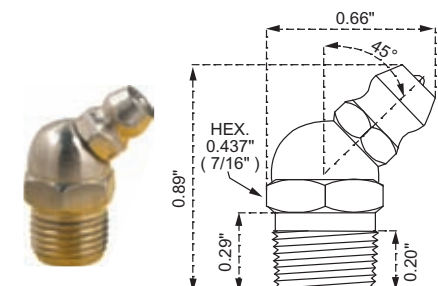
LX-3603 : 1/4"-28 Taper Thread (SAE-LT), 45°



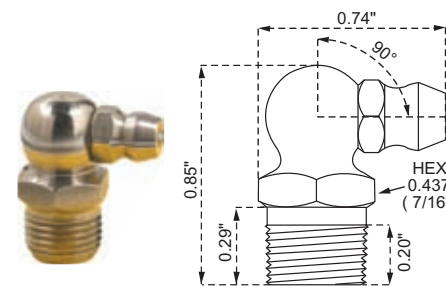
LX-3605 : 1/4"-28 Taper Thread (SAE-LT), 90°



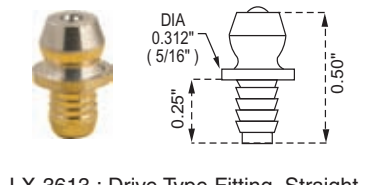
LX-3607 : 1/8" P.T.F. Special Extra Short, Straight



LX-3609 : 1/8" P.T.F., 45°



LX-3611 : 1/8" P.T.F., 90°

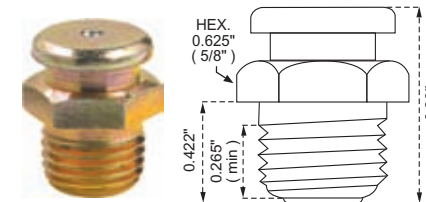


LX-3613 : Drive Type Fitting, Straight, for 3/16" Hole

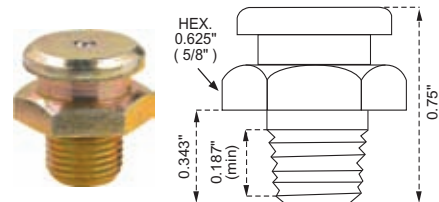
Standard Button Head, Grease Fittings

Precision-machined and case hardened for rugged wear. Maximum pressure: 8,000 PSI. Excellent for rugged applications, such as, Heavy Machinery and Contractor's Equipment.

Smooth face - prevents leakage and excessive wear. Long guide stem assures positive closing. Use with Button Head Couplers, LX-1450 or LX-1452 (Page 44)



LX-4301 : 1/4" N.P.T.F with Plunger Check



LX-4303 : 1/8" P.T.F with Plunger Check

Part No.	Type	Overall Length	Shank Length	Thread Length	Hex Size	Pack (Pcs.)
Stainless Steel						
LX-3601	Straight	0.54"	0.19"	0.10"	0.312" (5/16")	100
LX-3603	45°	0.81"	0.21"	0.11"	0.375" (3/8")	100
LX-3605	90°	0.75"	0.21"	0.10"	0.375" (3/8")	100
LX-3607	Straight	0.63"	0.28"	0.18"	0.437" (7/16")	100
LX-3609	45°	0.89"	0.29"	0.20"	0.437" (7/16")	100
LX-3611	90°	0.85"	0.29"	0.20"	0.437" (7/16")	100
LX-3613	Straight	0.50"	0.25"	0.25"	0.312" (5/16")	100
Standard Button Head with Plunger Check						
LX-4301	Straight	0.83"	0.422"	0.265"	0.625" (5/8")	100
LX-4303	Straight	0.75"	0.343"	0.187"	0.625" (5/8")	100

Mini Assortments

Mini Assortments contains most used sizes and configurations of fittings. Eight assorted grease fittings in popular sizes.

Metric Assortment pack contains three types of popular Metric fittings and covers almost all foreign vehicles applications. Mini Assortments are packaged on attractive display card.



Set No.	Description	Contents of Assortment	Fitting No.	Qty.
LX-4801	8 pc. Assortment (SAE) 1/4"-28 Taper Thread	1/4"-28 Taper Thread (SAE-LT), Straight 1/4"-28 Taper Thread (SAE LT), 45° 1/4"-28 Taper Thread (SAE LT), 90°	LX-3007 LX-3013 LX-3019	4 2 2
LX-4803	8 pc. Assortment (SAE) 1/8" P.T.F.	1/8" P.T.F. Special Extra Short, Straight 1/8" P.T.F. Special Short, 65° 1/8" P.T.F. Special Short, 90°	LX-3101 LX-3117 LX-3119	4 2 2
LX-4805	8 pc. Assortment (SAE) 1/4"-28 & 1/8" P.T.F.	1/4"-28 Taper Thread (SAE-LT), Straight 1/8" P.T.F. Special Extra Short, Straight 1/8" P.T.F. Special Short, 45° 1/8" P.T.F. Special Short, 90°	LX-3007 LX-3101 LX-3113 LX-3119	2 2 2 2
LX-4807	8 pc. Assortment (Metric) 6 mm x 1	6 mm x 1 mm, Taper Thread, Straight 6 mm x 1 mm, Taper Thread, 45° 6 mm x 1 mm, Taper Thread, 90°	LX-3301 LX-3303 LX-3305	4 2 2
LX-4808	8 pc. Assortment (Metric) 8 mm x 1	8 mm x 1 mm, Taper Thread, Straight 8 mm x 1 mm, Taper Thread, 45° 8 mm x 1 mm, Taper Thread, 90°	LX-3307 LX-3309 LX-3311	4 2 2
LX-4809	8 pc. Assortment (Metric) 6 mm x 1 & 8 mm x 1	6 mm x 1 mm, Taper Thread, Straight 6 mm x 1 mm, Taper Thread, 45° 6 mm x 1 mm, Taper Thread, 90° 8 mm x 1 mm, Taper Thread, Straight	LX-3301 LX-3303 LX-3305 LX-3307	2 2 2 2

Set No.	Description	Contents of Assortment	Fitting No.	Qty.
LX-4825	30 pc. Assortment (SAE) 1/4"-28 and 1/8" P.T.F.	1/4"-28 Taper Thread (SAE-LT), Straight 1/4"-28 Taper Thread (SAE LT), 45° 1/4"-28 Taper Thread (SAE LT), 90° 1/8" P.T.F. Special Extra Short, Straight 1/8" P.T.F. Special Short, 65° 1/8" P.T.F. Special Short, 90°	LX-3007 LX-3013 LX-3019 LX-3101 LX-3117 LX-3119	10 4 2 8 4 2
LX-4826	30 pc. S.S. Assortment (SAE) 1/4"-28 and 1/8" P.T.F.	1/4"-28 Taper Thread (SAE-LT), Straight 1/4"-28 Taper Thread (SAE LT), 45° 1/4"-28 Taper Thread (SAE LT), 90° 1/8" P.T.F. Special Extra Short, Straight 1/8" P.T.F., 45° 1/8" P.T.F., 90°	LX-3601 LX-3603 LX-3605 LX-3607 LX-3609 LX-3611	8 4 4 8 3 3
LX-4829	30 pc. Assortment (Metric) 6 mm x 1 and 8 mm x 1	6 mm x 1 mm, Taper Thread, Straight 6 mm x 1 mm, Taper Thread, 45° 6 mm x 1 mm, Taper Thread, 90° 8 mm x 1 mm, Taper Thread, Straight 8 mm x 1 mm, Taper Thread, 45° 8 mm x 1 mm, Taper Thread, 90°	LX-3301 LX-3303 LX-3305 LX-3307 LX-3309 LX-3311	8 4 3 8 4 3

'Pocket' Assortments - fits in your pocket!

Contains two types of the most popular domestic fittings and three types of popular metric fittings in attractive handy pack.



'Tool Box' Assortments - fits in your tool box!

Set No.	Description	Contents of Assortment	Fitting No.	Qty.
LX-4835	50 pc. Assortment (SAE) 1/4"-28 Taper Thread	1/4"-28 Taper Thread (SAE-LT), Straight 1/4"-28 Taper Thread (SAE LT), 45° 1/4"-28 Taper Thread (SAE LT), 90°	LX-3007 LX-3013 LX-3019	30 10 10
LX-4837	50 pc. Assortment (Metric) 6 mm x 1 and 8 mm x 1	6 mm x 1 mm, Taper Thread, Straight 6 mm x 1 mm, Taper Thread, 45° 6 mm x 1 mm, Taper Thread, 90° 8 mm x 1 mm, Taper Thread, Straight 8 mm x 1 mm, Taper Thread, 45° 8 mm x 1 mm, Taper Thread, 90°	LX-3301 LX-3303 LX-3305 LX-3307 LX-3309 LX-3311	15 5 5 15 5 5

Deluxe 'Shop' Assortments - Perfect for the Shop!

100 pcs. Assorted Fittings in six popular domestic (SAE) sizes and all the most popular metric sizes. Includes "Easy-out" 4-Way Grease Fitting Tool for installing new straight and angle-type fittings, re-thread holes and removing broken fittings. Sturdy, easy to handle transparent dispenser box with illustrated compartments.



Set No.	Description	Contents of Assortment	Fitting No.	Qty.
LX-4841	100 pc. Assortment (SAE) 1/4"-28 Taper and 1/8" P.T.F.	1/4"-28 Taper Thread (SAE-LT), Straight 1/4"-28 Taper Thread (SAE LT), 45° 1/4"-28 Taper Thread (SAE LT), 90° 1/8" P.T.F. Special Extra Short, Straight 1/8" P.T.F. Special Short, 45° 1/8" P.T.F. Special Short, 90° Large, 4-Way Grease Fitting Tool Small, 4-Way Grease Fitting Tool	LX-3007 LX-3013 LX-3019 LX-3101 LX-3113 LX-3119 LX-1428 LX-1426	40 10 10 20 10 10 1 1
LX-4843	100 pc. Assortment (Metric) 6 mm x 1 8 mm x 1 10 mm x 1	6 mm x 1 mm, Taper Thread, Straight 6 mm x 1 mm, Taper Thread, 45° 6 mm x 1 mm, Taper Thread, 90° 8 mm x 1 mm, Taper Thread, Straight 8 mm x 1 mm, Taper Thread, 45° 8 mm x 1 mm, Taper Thread, 90° 10 mm x 1 mm, Taper Metric Thread, St. 10 mm x 1 mm, Taper Metric Thread, 45° 10 mm x 1 mm, Taper Metric Thread, 90° Large, 4-Way Grease Fitting Tool Small, 4-Way Grease Fitting Tool	LX-3301 LX-3303 LX-3305 LX-3307 LX-3309 LX-3311 LX-3313 LX-3315 LX-3317 LX-1428 LX-1426	30 15 15 10 5 5 10 5 5 1 1

Grease Fitting Accessories

All-in-one tool to install new straight and angle-type fittings, rethread holes and remove straight, angle-type or old pin type broken fittings.

LX-1426 Small, 4-Way Grease Fitting Tool

- For Tapping 1/4"-28 threads and removal of 5/16" and 3/8" Straight or Angle Fittings

LX-1428 Large, 4-Way Grease Fitting Tool (1/8" NPT)

- For Tapping 1/8" NPT threads and removal of 7/16" Straight or Angle Fittings

LX-1450 Button Head Coupler, for 5/8" Button Head Fittings 1/8" NPT (F)

LX-1452 Button Head Coupler, for 7/8" Button Head Fittings 1/8" NPT (F)

- Specially Designed for Button Head Grease Fittings
- 1/8" NPT Female Inlet
- Recommended Working Pressure : 3,000 PSI (207 Bar)
- Maximum Operating Pressure : 4,500 PSI (310 Bar)
- Zinc Plated for Maximum Protection against Corrosion

LX-1454 Button Head Bushing Adapter 7/16"-27 (M) x 1/8" NPT (F)

- For adapting Standard or Large Button Head Couplers of 7/16-27 (M) threads to 1/8" NPT connection
- Recommended Working Pressure : 3,000 PSI (207 Bar)
- Maximum Operating Pressure : 4,500 PSI (310 Bar)
- Zinc Plated for Maximum Protection against Corrosion

LX-1458 Rubber Grease Fitting Caps

- Rubber Protective Caps to keep Dirt, Moisture and Contamination out of Grease Fittings
- Comes 5 pcs. to a handy pack

LX-1462 Grease Joint Rejuvenator

Have you ever tried to force grease through a grease joint or fitting and couldn't? By forcing penetrating oil through, the Grease Joint Rejuvenator opens clogged grease joints and fittings in less than a minute

- Works on all Automobiles, Trucks, Trailers, Aircraft, Industrial, Construction, Farming, Snow and Lawn Equipment
- Includes a 5" Flex Hose for those hard-to-reach Fittings



LX-1426



LX-1428



LX-1450



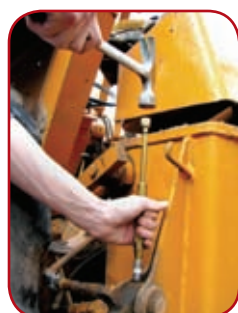
LX-1452



LX-1454



LX-1458



LX-1462

Grease Fittings – Cross Reference Chart

Lumax®	Alemite®	Lincoln®	Plews®	Guardian®	Lubrimatic®	Lumax®	Alemite®	Lincoln®	Plews®	Guardian®	Lubrimatic®
LX-3001	1792-B	5527				LX-3501	3009	700375			12101
LX-3003		240646			12061	LX-3503	3005	700504			
LX-3005		700395				LX-3505	1728-B	5033	11-252	G635	12104
LX-3007	1641-B	5010	11-100	G630	12051	LX-3507	1646-B1	5385			12113
LX-3009	1652-B	5013		G631	12054	LX-3509	1743-B	5029			12122
LX-3011	1680-B	5014			12057	LX-3511	1608-B	5031	11-256		12141
LX-3013	1637-B1	5210	11-104	G636	12066	LX-3513	1666	5036			
LX-3015	3010-B1	700396			12125	LX-3601	1966-S	5010-9			
LX-3019	1911-B1	5410	11-112	G634	12076	LX-3603	1968-S	5210-9			
LX-3029	1711-B		11-260			LX-3605	1969-S	5410-9			
LX-3031	1631-B					LX-3607	1961-S	5000-9			
LX-3101	1610-BL	5000	11-150		12011	LX-3611	1923-S				
LX-3103	1607-B	5003			12020	LX-3613		5033-9			
LX-3111	1611-B	5100	11-154		12027	LX-4301	A1186	5706			12127
LX-3113	1688-B	5200	11-158	G632	12031	LX-4303	A1184	5701			12025
LX-3117	1612-B	5300	11-162		12034	LX-4801	B1428		11-955		
LX-3119	1613-B	5400	11-166	G633	12039	LX-4803	B1827				
LX-3201	1627-B	5050	11-200		12091	LX-4805			11-955	G600	
LX-3203	1629-B	5350	11-204		12095	LX-4807			11-957		
LX-3301	2106	5175	11-300	G640	12131	LX-4809			11-957	G601	
LX-3303	2107	5176	11-302	G641	12153	LX-4825				G620	
LX-3305	2108	5177	11-304	G642	12135	LX-4829				G621	
LX-3307	2103	5178	11-310	G643	12147	LX-4835			11-950		12000
LX-3309		5179	11-312	G644	12156	LX-4837			11-960		
LX-3311	2105	5180	11-314	G645	12159	LX-4841	2398-1	5469	11-953		
LX-3313	2109	5181	11-320		12150	LX-4843		5186			
LX-3315		5182	11-322		12162	LX-1426	B315790		11-903	G904	
LX-3317		5183	11-324		12165	LX-1428	B315791		11-901	G905	
LX-3401	3038-B	205010			12082	LX-1430	5253	11485	11-912		
LX-3403	3053-B	205210			12085	LX-1432	5254-1	11509	11-914		
LX-3405	3054-B	205410			12088	LX-1450	42030-A	81458	05-048		
LX-3407	1720-B	205000			12023	LX-1452	304300-A	80933	05-049		
LX-3409	1724-B	205200				LX-1454		10460			
LX-3411	1723-B	205400			12042						

Alemite®, Lincoln®, Plews®, Guardian®, Lubrimatic® are Registered Trade Marks of their respective companies

Part No.	Page	Part No.	Page	Part No.	Page	Part No.	Page	Part No.	Page	Part No.	Page
LX-1100	5	LX-1321	22	LX-1502	17	LX-1704	26	LX-3019-5	36	LX-3401	38
LX-1112	5	LX-1322	23	LX-1504	17	LX-1705	26	LX-3029	37	LX-3403	38
LX-1120	5	LX-1330	23	LX-1506	17	LX-1706	26	LX-3031	37	LX-3405	38
LX-1123	5	LX-1331	24	LX-1508	17	LX-1708	26	LX-3101-M	37	LX-3407	38
LX-1142	6	LX-1332	24	LX-1509	17	LX-1708T	26	LX-3101	37	LX-3409	38
LX-1150	6	LX-1334	24	LX-1510	17	LX-1709	30	LX-3101-10	37	LX-3411	38
LX-1152	6	LX-1336	25	LX-1512	17	LX-1710	30	LX-3101-5	37	LX-3501	39
LX-1160	7	LX-1344	25	LX-1514	17	LX-1711	31	LX-3103	37	LX-3503	39
LX-1161	7	LX-1346	25	LX-1518	17	LX-1712	31	LX-3103-10	37	LX-3505	39
LX-1162	10	LX-1348	25	LX-1520	17	LX-1713	31	LX-3111	37	LX-3505-10	39
LX-1162-E	10	LX-1400	14	LX-1524	28	LX-1715	31	LX-3113	37	LX-3507	39
LX-1163	10	LX-1400-2	14	LX-1526	28	LX-1716	31	LX-3113-10	37	LX-3509	39
LX-1163-E	10	LX-1400-6	14	LX-1528	28	LX-1718	31	LX-3113-5	37	LX-3509-10	39
LX-1164	11	LX-1400-B	14	LX-1530	28	LX-1720	31	LX-3117	37	LX-3511	39
LX-1165	11	LX-1401	14	LX-1532	28	LX-1722	31	LX-3119	37	LX-3511-10	39
LX-1166	11	LX-1402	14	LX-1534	28	LX-1804	32	LX-3119-10	37	LX-3513	39
LX-1167	11	LX-1404	14	LX-1536	28	LX-1806	32	LX-3119-5	37	LX-3513-10	39
LX-1168	12	LX-1406	15	LX-1538	28	LX-1808	32	LX-3201	38	LX-3601	41
LX-1171	8-9	LX-1408	15	LX-1600	26	LX-1810	32	LX-3201-10	38	LX-3603	41
LX-1172	12	LX-1409	15	LX-1602	26	LX-1812	32	LX-3203	38	LX-3605	41
LX-1173	12	LX-1410	15	LX-1604	26	LX-1814	32	LX-3301	40	LX-3607	41
LX-1184	12	LX-1412	15	LX-1606	26	LX-1816	32	LX-3301-10	40	LX-3609	41
LX-1185	12	LX-1414	15	LX-1608	26	LX-1818	32	LX-3301-5	40	LX-3611	41
LX-1201	13	LX-1415	16	LX-1609	27	LX-1901	12	LX-3303	40	LX-3613	41
LX-1203	13	LX-1416	16	LX-1610	27	LX-3001	36	LX-3303-10	40	LX-4301	41
LX-1205	13	LX-1418	16	LX-1612	27	LX-3003	36	LX-3305	40	LX-4303	41
LX-1207	13	LX-1420	16	LX-1613	27	LX-3005	36	LX-3305-10	40	LX-4801	42
LX-1211	13	LX-1422	16	LX-1614	27	LX-3005-10	36	LX-3307	40	LX-4803	42
LX-1212	13	LX-1424	16	LX-1616	29	LX-3007	36	LX-3307-10	40	LX-4805	42
LX-1214	13	LX-1426	44	LX-1618	29	LX-3007-10	36	LX-3309	40	LX-4807	42
LX-1215	13	LX-1428	44	LX-1622	29	LX-3007-5	36	LX-3309-10	40	LX-4808	42
LX-1300	20	LX-1430	39	LX-1624	29	LX-3009	36	LX-3311	40	LX-4809	42
LX-1302	20	LX-1432	39	LX-1626	29	LX-3009-10	36	LX-3311-10	40	LX-4825	42
LX-1310	20	LX-1434	16	LX-1628	29	LX-3011	36	LX-3313	40	LX-4826	42
LX-1312	20	LX-1450	44	LX-1629	29	LX-3011-10	36	LX-3313-10	40	LX-4829	42
LX-1316	21	LX-1452	44	LX-1631	29	LX-3013	36	LX-3313-5	40	LX-4835	43
LX-1317	21	LX-1454	44	LX-1632	30	LX-3013-10	36	LX-3315	40	LX-4837	43
LX-1318	22	LX-1458	44	LX-1638	30	LX-3013-5	36	LX-3315-10	40	LX-4841	43
LX-1320	22	LX-1462	44	LX-1640	30	LX-3015	36	LX-3315-5	40	LX-4843	43
		LX-1500	17	LX-1700	26	LX-3019	36	LX-3317	40		
		LX-1500W	17	LX-1702	26	LX-3019-10	36	LX-3317-10	40		



Lumax® eye-appealing packaging puts many of our products within easy reach of your customers. And that means when you hang up a colorful Lumax® product display, you're sure to ring up more sales.





Lumax®

3705 Centre Circle, Fort Mill, SC 29715, USA

Tel. : 803-548-3000 / 1-877-465-8629

Fax : 803-547-0800

© 2009

www.Lumax.Com